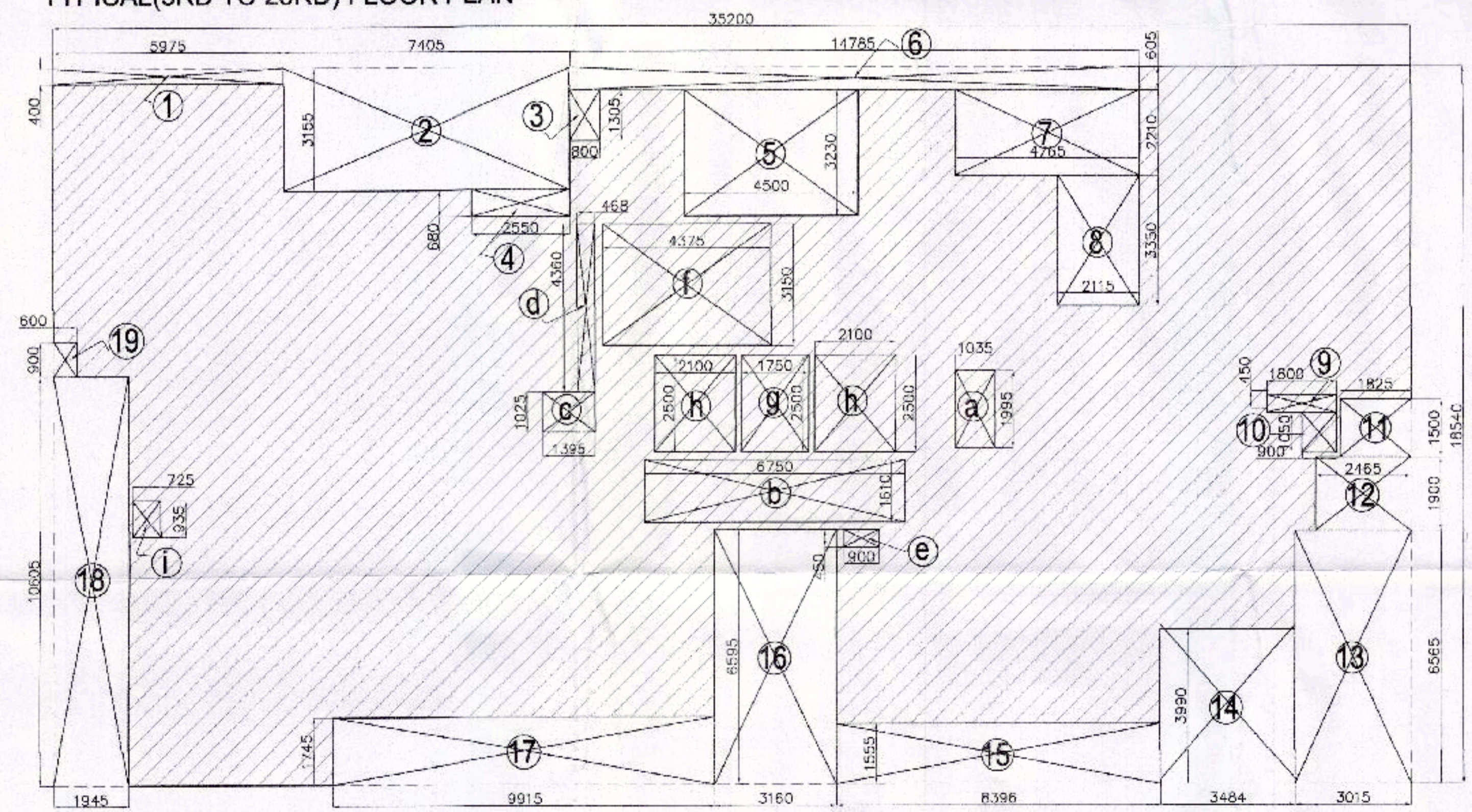


TOWER - 7
TYPICAL(3RD TO 23RD) FLOOR PLAN

TOWER - 8
TYPICAL(3RD TO 23RD) FLOOR PLAN



TOWER - 7 & 8
TYPICAL ENVELOPE (3RD TO 23RD) FLOOR

DOOR SCHEDULE

SR. NO	TYPE	SIZE	DESCRIPTION	LINTEL HT. (IN MM)	QUANTITY	LOCATION
1	D	1200 X 2400	SINGLE SWING	2400	36	RAWR LOBBY
2	D1	900 X 2400	SINGLE SWING	2400	10	BEDROOM DOOR
3	D2	800 X 2400	SINGLE SWING	2400	32	TOILET, SERVANT ROOM, STORE
4	BD	3000 X 2400	SLIDING DOOR	2400	1	LIVING, BEDROOM
5	BD1	2700 X 2400	SLIDING DOOR	2400	64	LIVING, BEDROOM
6	BD2	2400 X 2400	SLIDING DOOR	2400	10	BEDROOM
7	BD3	2100 X 2400	SLIDING DOOR	2400	62	BEDROOM, FAMILY ROOM
8	BD4	1800 X 2400	SLIDING DOOR	2400	62	BEDROOM, KITCHEN
9	BD5	1500 X 2400	SLIDING DOOR	2400	62	KITCHEN, BEDROOM
10	BD6	1400 X 2400	SLIDING DOOR	2400	64	BALCONY
11	BD7	1200 X 2400	SLIDING DOOR	2400	64	KITCHEN
12	BD8	1100 X 2400	SLIDING DOOR	2400	64	KITCHEN
13	FD	1000 X 2400	SLIDING DOOR	2400	64	KITCHEN
14	OP	900 X 2400	OPENING	2400	64	KITCHEN
15	PC1	300 X 2400	DOUBLE SWING FIRE DOOR	2400	68	ELEC. DUCT, FIRE DUCT
16	PC2	450 X 2400	SINGLE SWING FIRE DOOR	2400	68	A.C. DUCT

WINDOW SCHEDULE

SR. NO	TYPE	SIZE	DESCRIPTION	SILL LVL. (IN MM)	LINTEL HT. (IN MM)	QUANTITY	LOCATION
1	W1	2700 X 1800	SLIDING WINDOW	800	2400	24	DOUBLE HEIGHT LIVING
2	W2	2400 X 1800	SLIDING WINDOW	800	2100	24	DOUBLE HEIGHT LIVING
3	W3	2100 X 1800	SLIDING WINDOW	800	2100	24	DOUBLE HEIGHT LIVING
4	W4	1800 X 1800	SLIDING WINDOW	800	2100	24	LIVING, ENTRANCE LOBBY
5	W5A	1900 X 2300	SLIDING WINDOW	800	2400	64	LIVING, ENTRANCE LOBBY
6	W6	1600 X 1800	SLIDING WINDOW	800	2850	64	BEDROOM, ENTRANCE LOBBY
7	W6A	1600 X 2300	SLIDING WINDOW	800	2850	64	BEDROOM, ENTRANCE LOBBY
8	W7	1200 X 1400	SLIDING WINDOW	800	2400	32	DINING
9	W8	900 X 1400	OPENABLE	1000	2400	32	STAIRWELL
10	W9	900 X 1200	OPENABLE	1000	2400	32	TOILET
11	W10A	1200 X 1200	GRG JALI	1200	2400	24	TOILET DUCT VOID
12	W10B	900 X 1200	GRG JALI	1200	2400	12	TOILET DUCT
13	W10C	1700 X 4300	GRG JALI	1200	1500	120	UTILITY
14	W10D	2300 X 8400	GRG JALI	1200	8400	62	TOILET DUCT VOID
15	W10E	450 X 900	GRG JALI	1000	2400	10	A.C. DUCT
16	W10F	800 X 4200	GRG JALI	1200	4200	62	TOILET DUCT
17	W10G	1000 X 4800	GRG JALI	1400	4800	62	UTILITY
18	W10H	375 X 375	GRG JALI	---	---	---	UTILITY
19	W10I	1200 X 1500	GRG JALI	1200	1500	24	TOILET DUCT
20	W10J	2800 X 7000	GRG JALI	1200	7000	62	TOILET DUCT
21	W10K	600 X 300	GRG JALI	1500	7000	62	TOILET DUCT
22	W10L	1500 X 900	GRG JALI	900	2400	62	TOILET DUCT

TYPICAL FLOOR AREA DETAIL (TOWER - 7)

LEGEND	BREADTH (B)	LENGTH (L)	NOS.	AREA IN SQM	SPACE USAGE
[A]	35.200	X	18.940	X	1 = 652.608
TOTAL = 652.608					--- (I)

DEDUCTIONS

LEGEND	BREADTH (B)	LENGTH (L)	NOS.	AREA IN SQM	SPACE USAGE
1	5.975	X	0.400	X	1 = 2.390
2	7.405	X	3.155	X	1 = 23.363
3	0.800	X	1.305	X	1 = 1.044
4	2.550	X	0.680	X	1 = 1.734
5	4.500	X	3.230	X	1 = 14.535
6	14.785	X	0.805	X	1 = 8.945
7	4.785	X	2.210	X	1 = 10.531
8	2.115	X	3.350	X	1 = 7.085
9	1.800	X	0.450	X	1 = 0.810
10	0.900	X	1.050	X	1 = 0.945
11	1.825	X	1.500	X	1 = 2.738
12	2.465	X	1.900	X	1 = 4.684
13	3.015	X	6.565	X	1 = 19.793
14	3.500	X	3.990	X	1 = 13.965
15	8.380	X	1.555	X	1 = 13.031
16	3.160	X	6.595	X	1 = 20.840
17	9.915	X	1.745	X	1 = 17.302
18	1.945	X	10.605	X	1 = 20.627
19	0.600	X	0.900	X	1 = 0.540
TOTAL = 184.901					--- (II)
NET ENVELOPE ON FLOOR (I - II) = 467.707					--- (III)

SERVICES AREA

LEGEND	BREADTH (B)	LENGTH (L)	NOS.	AREA IN SQM	SPACE USAGE
a	1.035	X	1.995	X	1 = 2.065
b	6.750	X	1.610	X	1 = 10.868
c	1.395	X	1.025	X	1 = 1.430
d	0.468	X	4.360	X	1 = 2.040
e	0.900	X	0.450	X	1 = 0.405
f	4.375	X	3.150	X	1 = 13.781
g	1.750	X	2.500	X	1 = 4.375
h	2.100	X	2.500	X	2 = 10.500
i	0.725	X	0.935	X	1 = 0.678
TOTAL SERVICE AREA = 46.142					--- (IV)
NET FAR. ON FLOOR (III) - (IV) = 421.566					FAR
TOWER (8) AREA IS SAME AS TOWER (7) AREA = 421.566					FAR

PROJECT PROPOSED GROUP HOUSING BUILDING ON PLOT NO.GH-01/C, SEC - 168 NOIDA FOR.- SUNWORLD RESIDENCY PVT LTD.	TITLE REV. SUBMISSION DRAWING FLOOR PLAN & AREA ENVELOPE CALCULATION (TOWER - 7 & 8)	JOB.NO. 1281	DATE 25 - 05 - 15	DRN. BY SANDEEP	ARCHITECT'S SIGN. 	OWNER'S SIGN. For SUNWORLD RESIDENCY PVT. LTD. 	CONSULTANT R.N.Gupta & Associates Consulting Engineers, Architects & Valuers E - 1, Sector-55, Noida Phones - (+120) 4321556 email-info@rngcorp.com
		DR.NO. 14	NORTH	CHKD. BY G.S.B.			