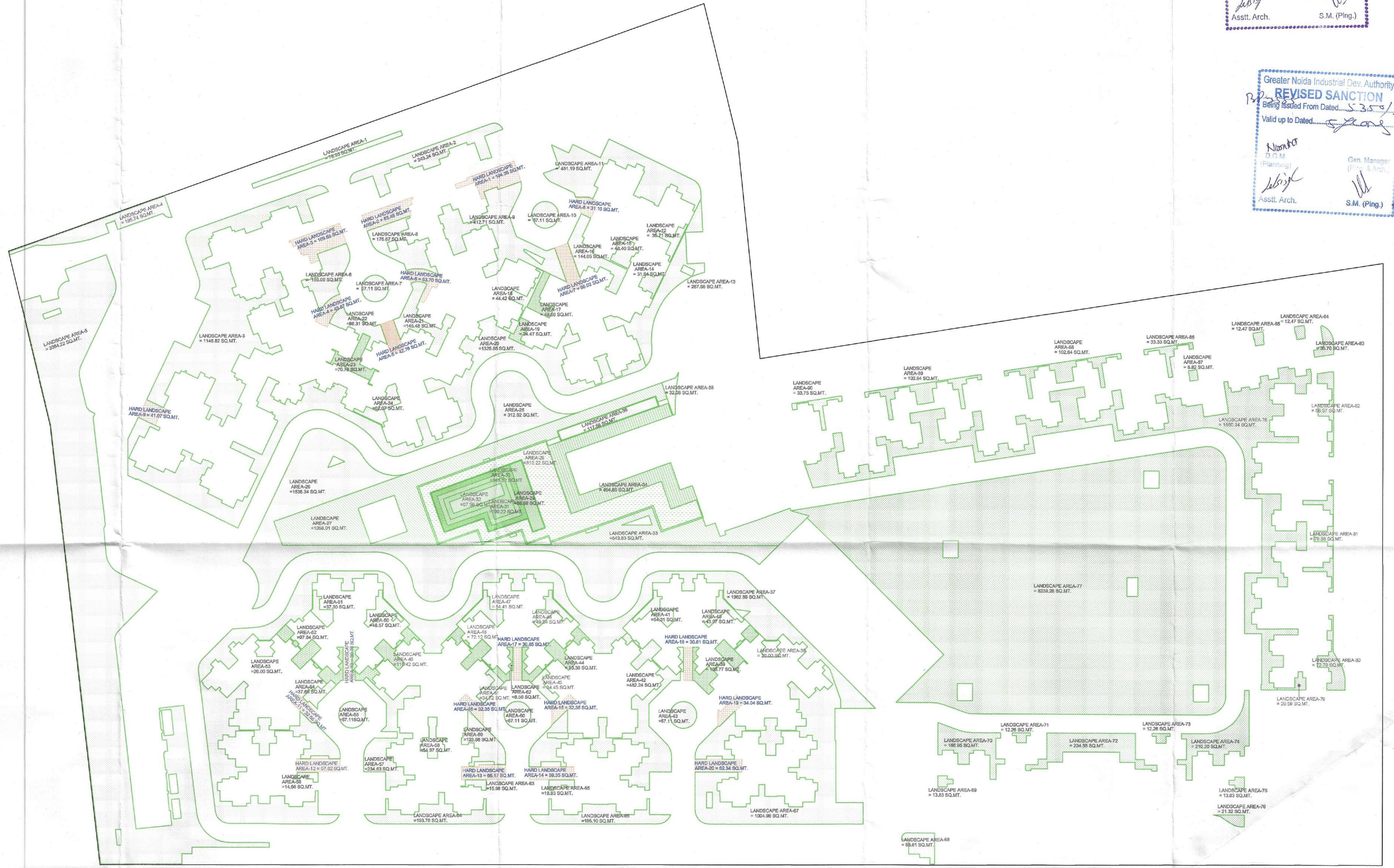


Greater Noida Industrial Dev. Authority
APPROVED
 No. Letter No. 1131 Dated: 28/12/2012
 Valid up to Dated: 28/12/2012
 Namita D.G.M. (Png. & Arch.)
 Asstt. Arch.
 Gen. Manager (Png. & Arch.)
 S.M. (Png.)

Greater Noida Industrial Dev. Authority
REVISED SANCTION
 Being Issued From Dated: 30/03/2017
 Valid up to Dated: 30/03/2017
 Namita D.G.M. (Planning)
 Asstt. Arch.
 Gen. Manager (Png. & Arch.)
 S.M. (Png.)

LANDSCAPE AREA DETAIL	
LANDSCAPE AREA-01	76.95
LANDSCAPE AREA-02	243.24
LANDSCAPE AREA-03	1146.82
LANDSCAPE AREA-04	195.74
LANDSCAPE AREA-05	3384.22
LANDSCAPE AREA-06	155.06
LANDSCAPE AREA-07	57.11
LANDSCAPE AREA-08	176.87
LANDSCAPE AREA-09	412.71
LANDSCAPE AREA-10	57.11
LANDSCAPE AREA-11	451.19
LANDSCAPE AREA-12	35.71
LANDSCAPE AREA-13	267.58
LANDSCAPE AREA-14	31.84
LANDSCAPE AREA-15	46.4
LANDSCAPE AREA-16	144.65
LANDSCAPE AREA-17	48.66
LANDSCAPE AREA-18	44.42
LANDSCAPE AREA-19	24.47
LANDSCAPE AREA-20	1325.85
LANDSCAPE AREA-21	145.48
LANDSCAPE AREA-22	88.31
LANDSCAPE AREA-23	70.78
LANDSCAPE AREA-24	62.07
LANDSCAPE AREA-25	312.62
LANDSCAPE AREA-26	1636.34
LANDSCAPE AREA-27	1058.01
LANDSCAPE AREA-28	813.22
LANDSCAPE AREA-29	88.69
LANDSCAPE AREA-30	108.32
LANDSCAPE AREA-31	109.22
LANDSCAPE AREA-32	67.59
LANDSCAPE AREA-33	543.83
LANDSCAPE AREA-34	454.8
LANDSCAPE AREA-35	32.08
LANDSCAPE AREA-36	117.66
LANDSCAPE AREA-37	1962.89
LANDSCAPE AREA-38	26.00
LANDSCAPE AREA-39	106.77
LANDSCAPE AREA-40	43.97
LANDSCAPE AREA-41	54.31
LANDSCAPE AREA-42	482.24
LANDSCAPE AREA-43	57.11
LANDSCAPE AREA-44	83.38
LANDSCAPE AREA-45	34.45
LANDSCAPE AREA-46	49.54
LANDSCAPE AREA-47	54.41
LANDSCAPE AREA-48	72.12
LANDSCAPE AREA-49	116.42
LANDSCAPE AREA-50	48.57
LANDSCAPE AREA-51	37.30
LANDSCAPE AREA-52	97.84
LANDSCAPE AREA-53	26.00
LANDSCAPE AREA-54	37.68
LANDSCAPE AREA-55	57.11
LANDSCAPE AREA-56	14.56
LANDSCAPE AREA-57	234.53
LANDSCAPE AREA-58	54.97
LANDSCAPE AREA-59	123.68
LANDSCAPE AREA-60	57.11
LANDSCAPE AREA-61	34.72
LANDSCAPE AREA-62	8.56
LANDSCAPE AREA-63	15.98
LANDSCAPE AREA-64	193.78
LANDSCAPE AREA-65	18.93
LANDSCAPE AREA-66	186.1
LANDSCAPE AREA-67	1004.96
LANDSCAPE AREA-68	68.61
LANDSCAPE AREA-69	13.83
LANDSCAPE AREA-70	166.95
LANDSCAPE AREA-71	12.26
LANDSCAPE AREA-72	234.55
LANDSCAPE AREA-73	12.26
LANDSCAPE AREA-74	210.2
LANDSCAPE AREA-75	13.83
LANDSCAPE AREA-76	21.32
LANDSCAPE AREA-77	8239.28
LANDSCAPE AREA-78	1560.34
LANDSCAPE AREA-79	20.59
LANDSCAPE AREA-80	72.79
LANDSCAPE AREA-81	79.86
LANDSCAPE AREA-82	56.57
LANDSCAPE AREA-83	35.7
LANDSCAPE AREA-84	12.47
LANDSCAPE AREA-85	12.47
LANDSCAPE AREA-86	33.33
LANDSCAPE AREA-87	8.82
LANDSCAPE AREA-88	102.84
LANDSCAPE AREA-89	102.84
LANDSCAPE AREA-90	33.75
TOTAL	30557.07



HARD LANDSCAPE AREA DETAIL	
HARD LANDSCAPE AREA-01	104.38
HARD LANDSCAPE AREA-02	83.48
HARD LANDSCAPE AREA-03	109.65
HARD LANDSCAPE AREA-04	43.67
HARD LANDSCAPE AREA-05	42.76
HARD LANDSCAPE AREA-06	53.7
HARD LANDSCAPE AREA-07	65.02
HARD LANDSCAPE AREA-08	31.1
HARD LANDSCAPE AREA-09	41.07
HARD LANDSCAPE AREA-10	30.76
HARD LANDSCAPE AREA-11	32.66
HARD LANDSCAPE AREA-12	57.62
HARD LANDSCAPE AREA-13	65.17
HARD LANDSCAPE AREA-14	59.35
HARD LANDSCAPE AREA-15	32.35
HARD LANDSCAPE AREA-16	32.35
HARD LANDSCAPE AREA-17	30.85
HARD LANDSCAPE AREA-18	30.61
HARD LANDSCAPE AREA-19	34.04
HARD LANDSCAPE AREA-20	62.34
TOTAL	1042.93

TOTAL LANDSCAPE AREA = LANDSCAPE AREA + HARD LANDSCAPE AREA
 = 30557.07 + 1042.93 = 31600.00 SQ.MT.

LANDSCAPE AREA DETAIL

PROJECT :-
RESIDENTIAL COMPLEX AT PLOT NO. GH-05 SECTOR - 16B GREATER NOIDA

BUILDERS & PROMOTER :-
S.J.P. INFRACON LTD.,
 A-133, Sector 63, Noida

DRAWING TITLE :-
LANDSCAPE AREA DETAIL

DRAWN BY :- [] CHECKED BY :- [] SCALE :- [] DATED :- []
 SANJAY [] 1 : 700 [] [] []

For SJP/INFRACON LTD.

DARSHAN SINGH
 CA/89/12573

ARCHITECT'S SIGN.
 OWNER'S SIGN DRG.No. - LA-01