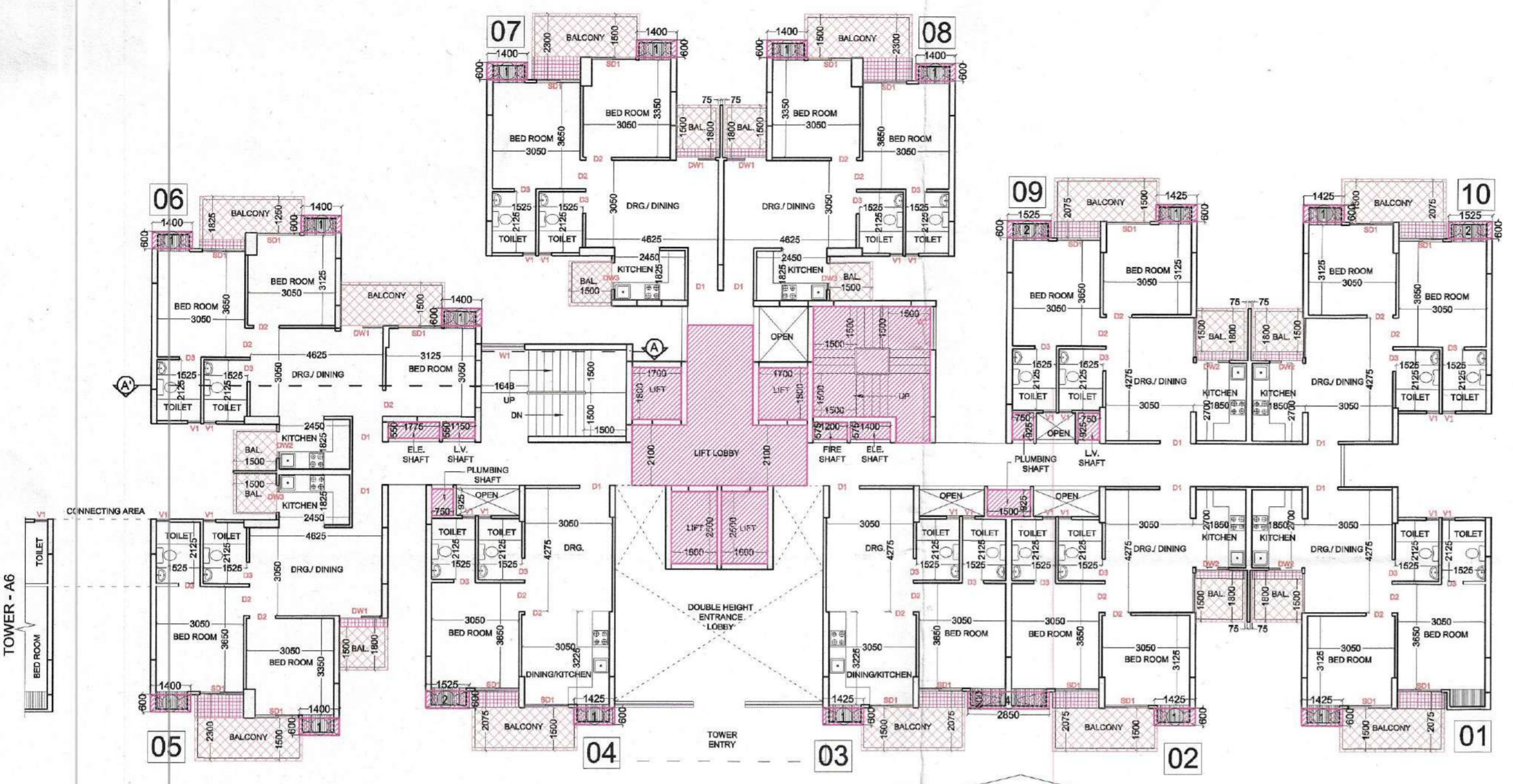
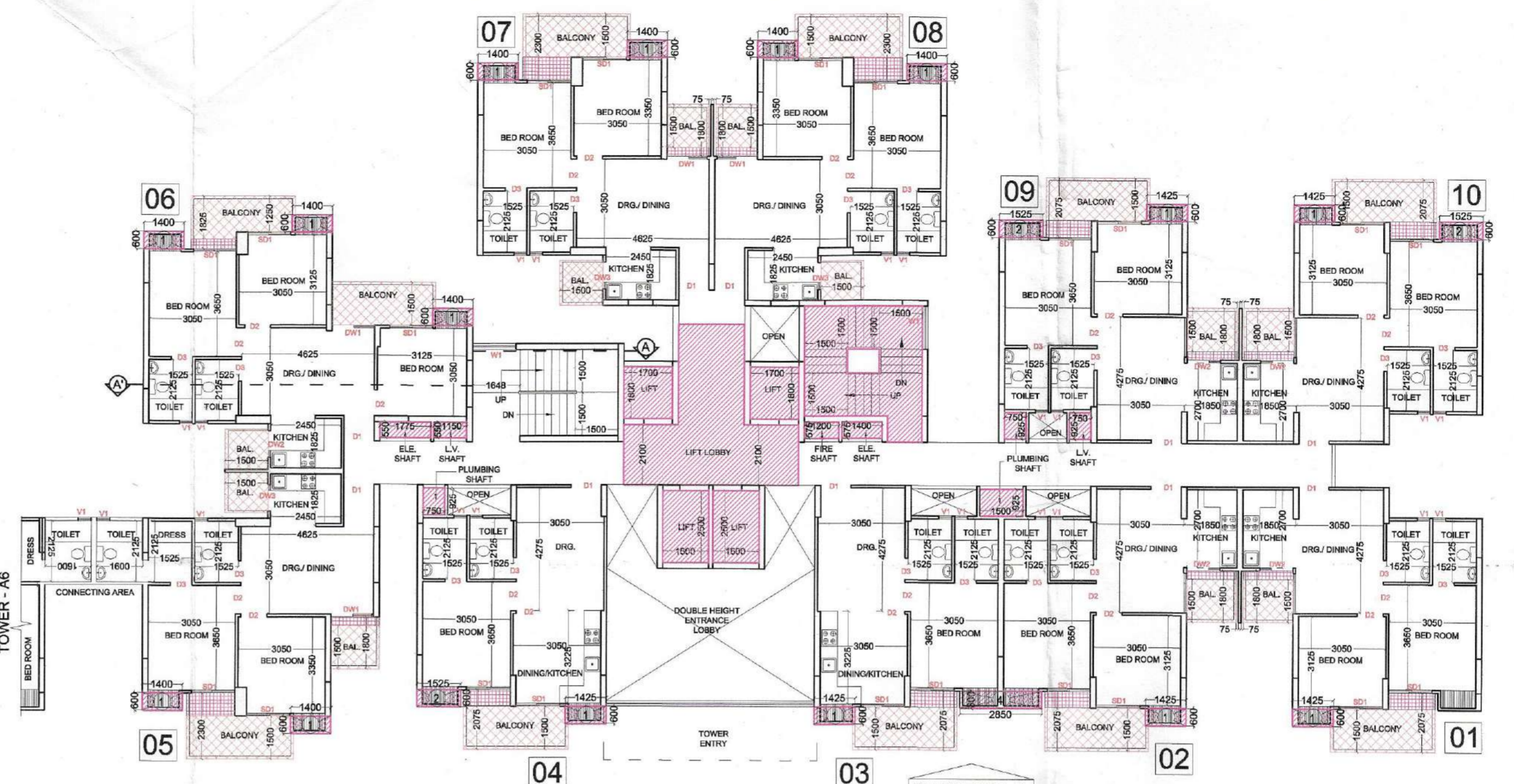


Greater Noida Industrial Dev. Authority  
**APPROVED**  
 Plan No. 113/1, Dated: 25/03/2022  
 Valid up to Date: 25/03/2022  
 Nishant D.G.M. (Plng. & Arch.)  
 Asstt. Arch.  
 Gen. Manager (Plng. & Arch.)  
 S.M. (Plng.)

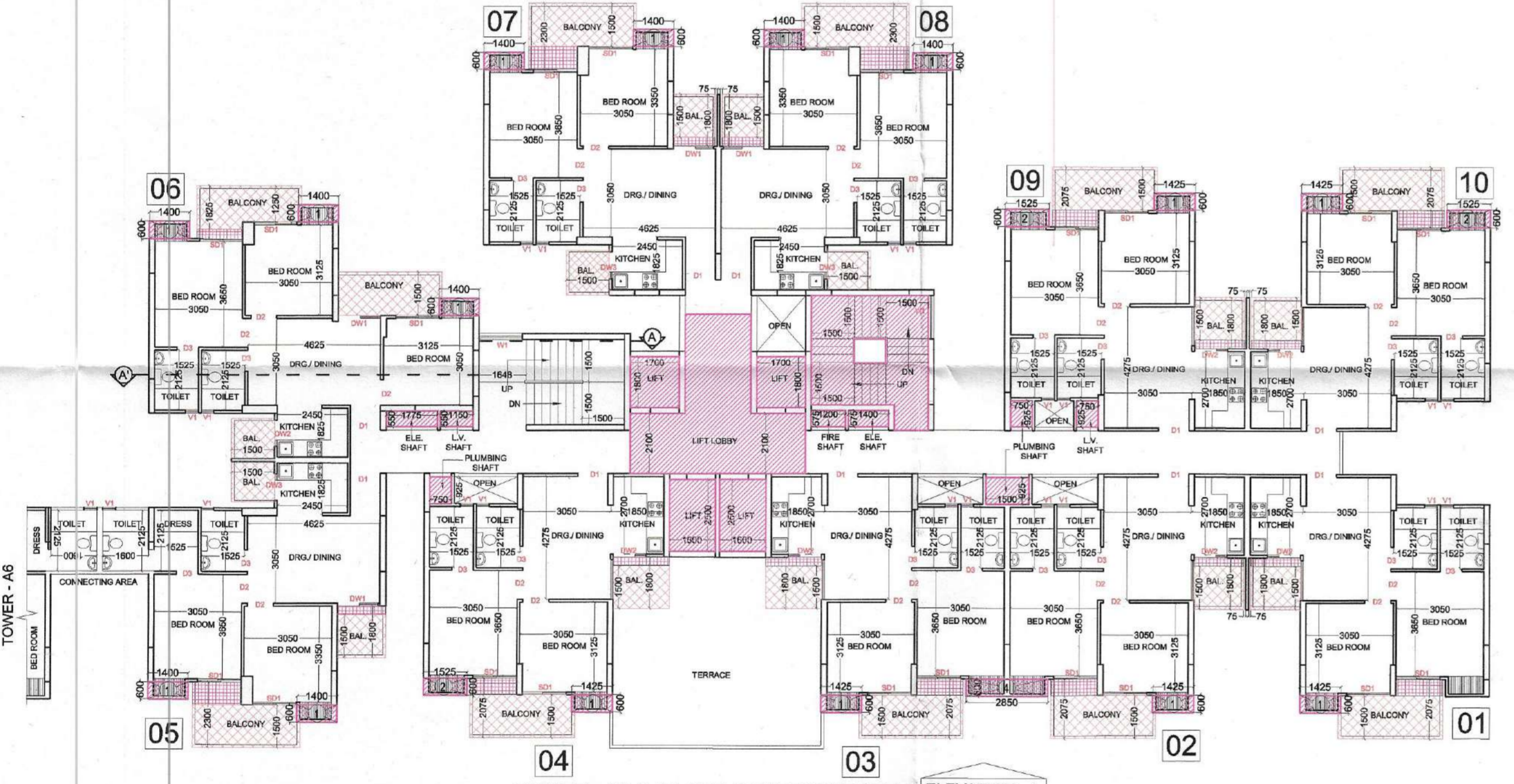
Greater Noida Industrial Dev. Authority  
**REVISED SANCTION**  
 Being Issued From Date: 25/03/2022  
 Valid up to Date: 25/03/2022  
 Nishant D.G.M. (Planning)  
 Asstt. Arch.  
 Gen. Manager (Plng. & Arch.)  
 S.M. (Plng.)



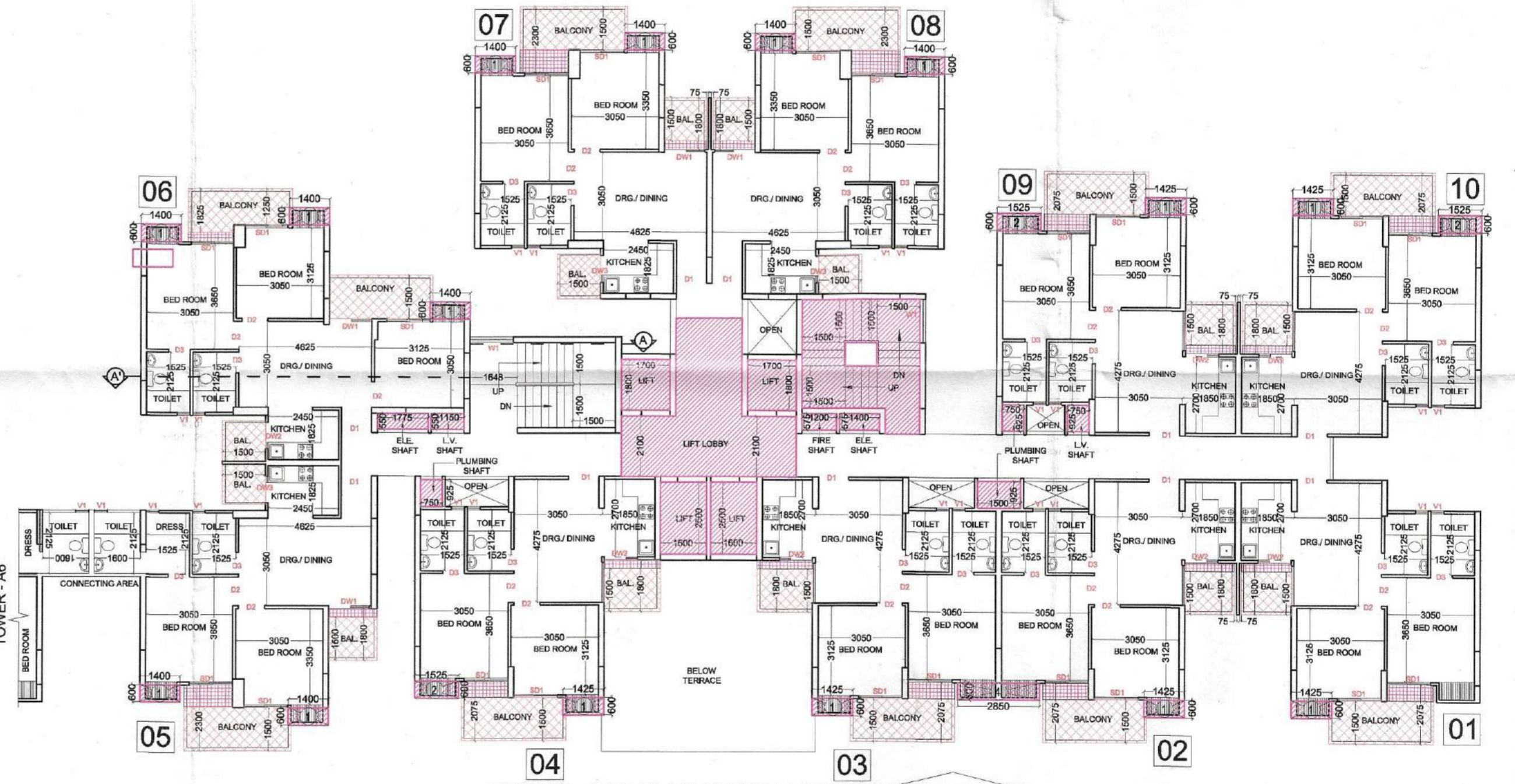
TOWER - A5 & A6 ARE SAME ( MIRROR )  
 GROUND FLOOR PLAN



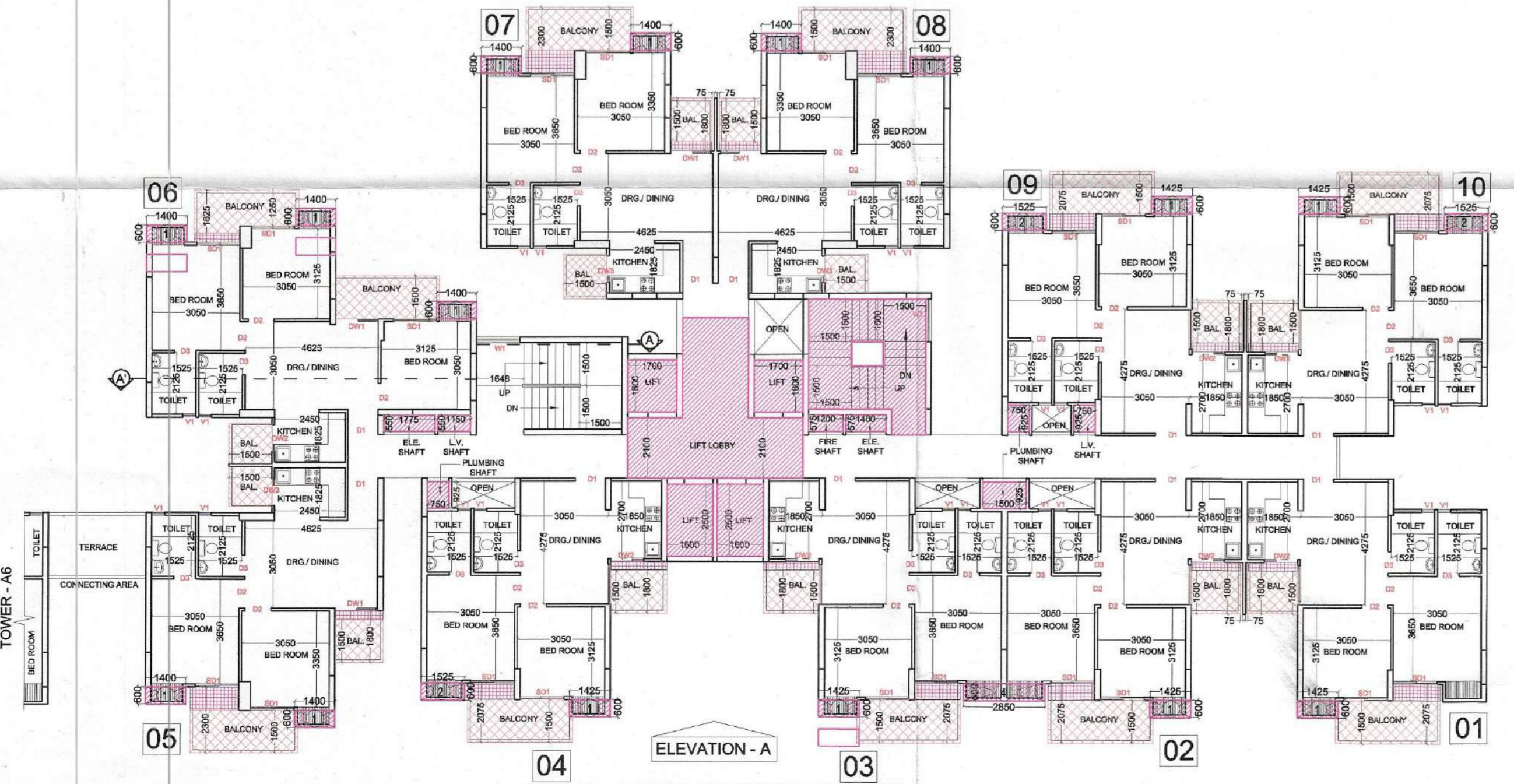
TOWER - A5 & A6 ARE SAME ( MIRROR )  
 FIRST FLOOR PLAN



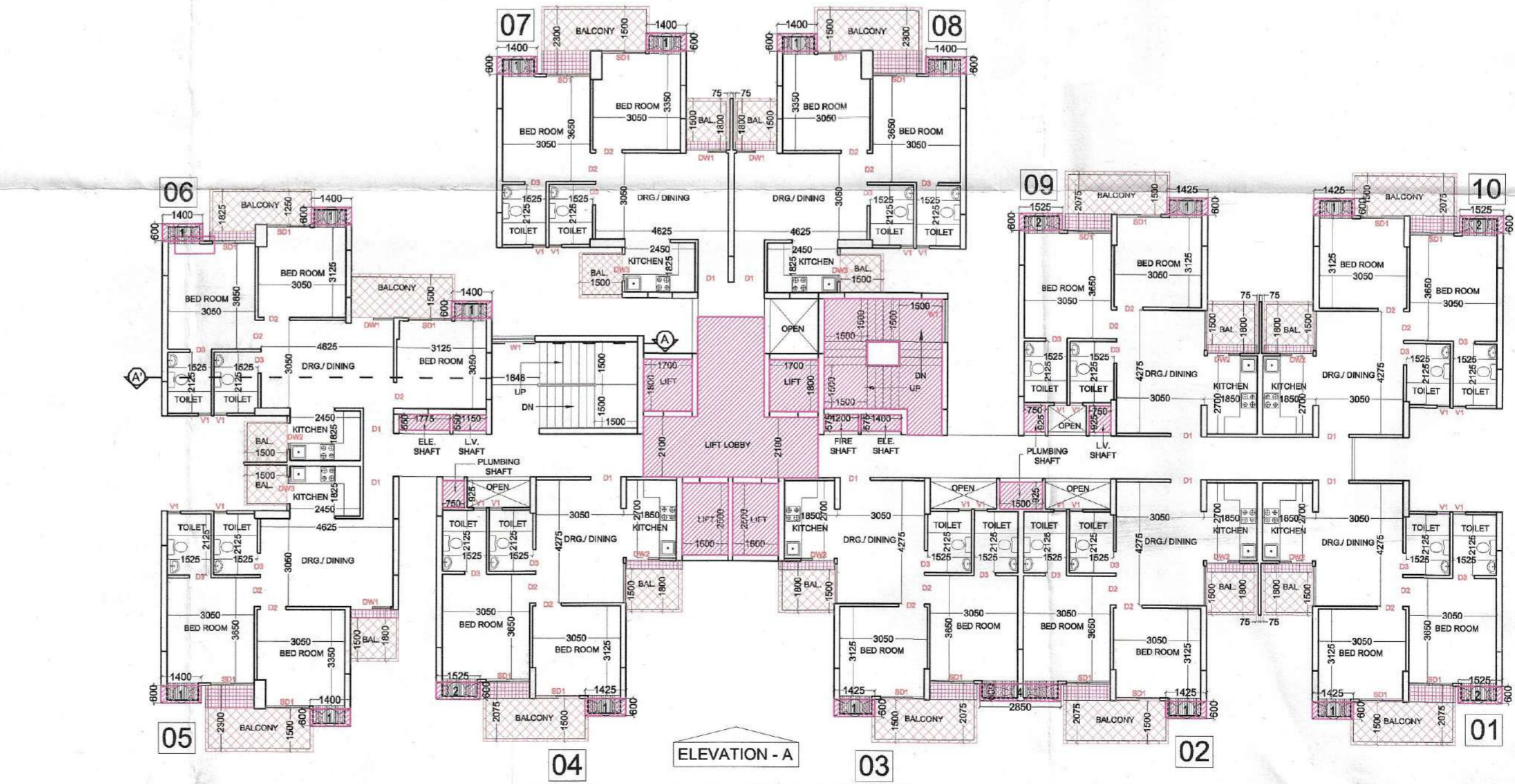
TOWER - A5 & A6 ARE SAME ( MIRROR )  
 SECOND FLOOR PLAN



TOWER - A5 & A6 ARE SAME ( MIRROR )  
 THIRD FLOOR PLAN



TOWER - A5 & A6 ARE SAME ( MIRROR )  
 4th. FLOOR PLAN



TOWER - A5 & A6 ARE SAME ( MIRROR )  
 5th. TO 24th. FLOOR PLAN

PROJECT :- RESIDENTIAL COMPLEX AT GREATER NOIDA PLOT NO. GH-05 SECTOR - 16B  
 BUILDERS & PROMOTER :- SHDI GROUP S.J.P. INFRACON LTD., A-133, Sector 63, Noida  
 DRAWING TITLE :- TOWER-A5 & A6 GROUND TO 24th FLOOR PLAN

DRAWN BY :- CHECKED BY :- SCALE 1 : 150 DATED :-  
 SANJAY  
 For SJP INFRACON LTD. DARSHAN SINGH CA/89/125/3 ARCHITECT'S SIGN. A5/A6 - 01