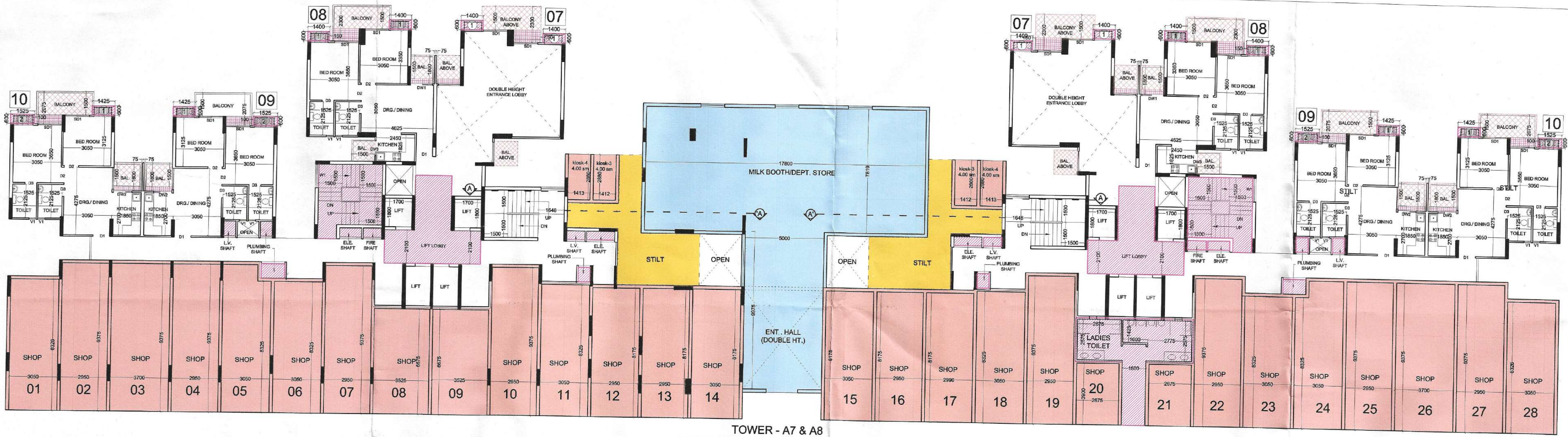


APPROVED
 Valid up to Dated: 25/12/2017
 COMMERCIAL HATCH
 STILT HATCH
 MILK BOOTH HATCH

Greater Noida Industrial Dev. Authority
 REVISED SANCTION
 Issued From Dated: 25/12/2017
 Valid up to Dated: 25/12/2017
 S.M. (Plng.)
 S.M. (Plng.)



TOWER - A7 & A8
 COMMERCIAL GROUND FLOOR PLAN

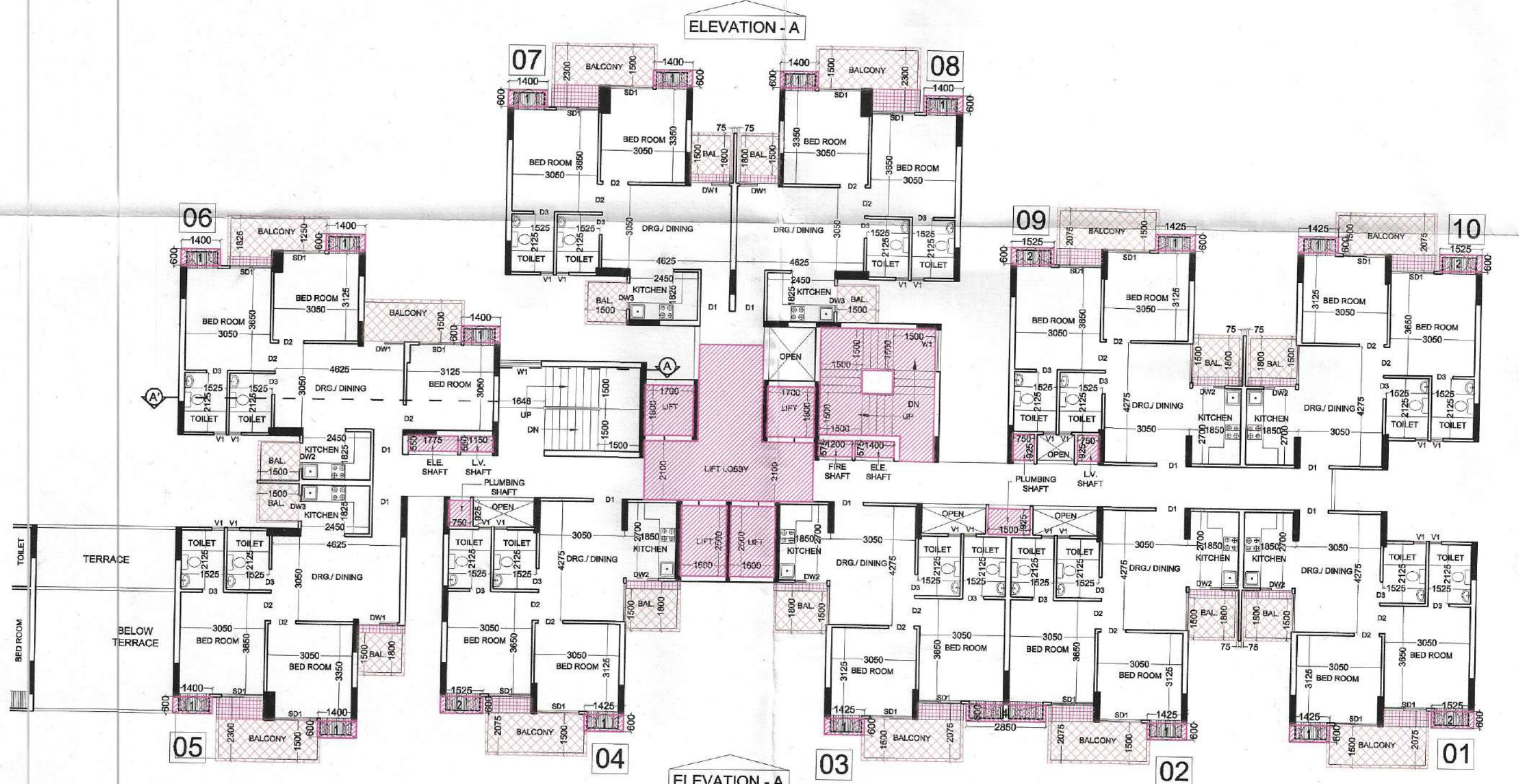
ELEVATION - A



TOWER - A7 & A8 ARE SAME (MIRROR)
 1st. FLOOR PLAN



TOWER - A7 & A8 ARE SAME (MIRROR)
 2nd. FLOOR PLAN



TOWER - A7 & A8 ARE SAME (MIRROR)
 3rd. FLOOR PLAN



TOWER - A7 & A8 ARE SAME (MIRROR)
 4th. TO 27th. FLOOR PLAN

PROJECT - RESIDENTIAL COMPLEX AT GREATER NOIDA PLOT NO. GH-05 SECTOR - 16B
 BUILDERS & PROMOTER - SHRI GROUP S.J.P. INFRACON LTD. A-133, Sector 63, Noida
 DRAWING TITLE - TOWER-A7 & A8 GROUND TO 28th FLOOR PLAN,
 DRAWN BY: / CHECKED BY: / SCALE: 1 : 150 / DATED: /
 For S.J.P. INFRACON LTD. ARCHITECT'S SIGN. A7/A8 - 01
 OWNER'S SIGN