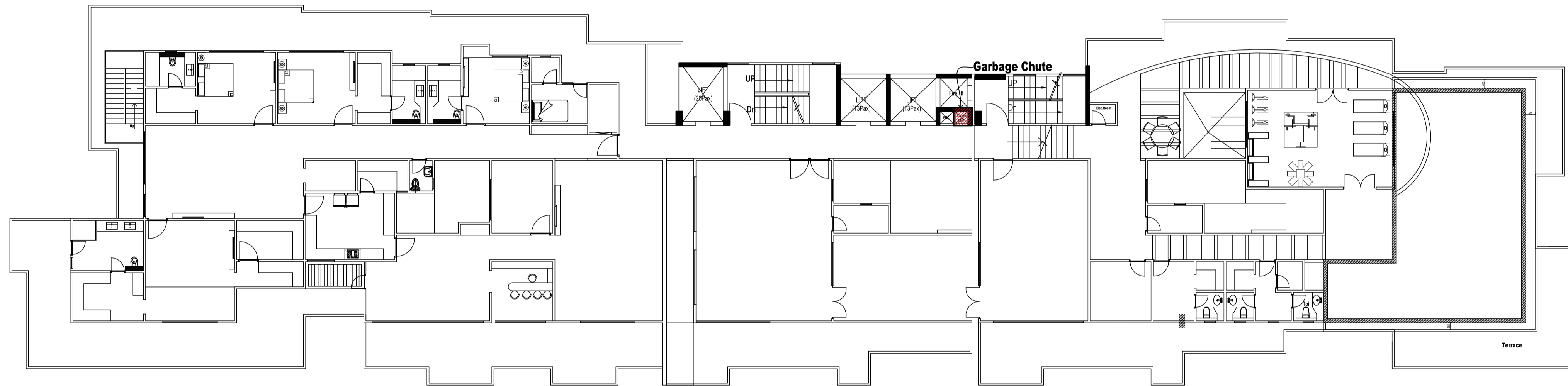
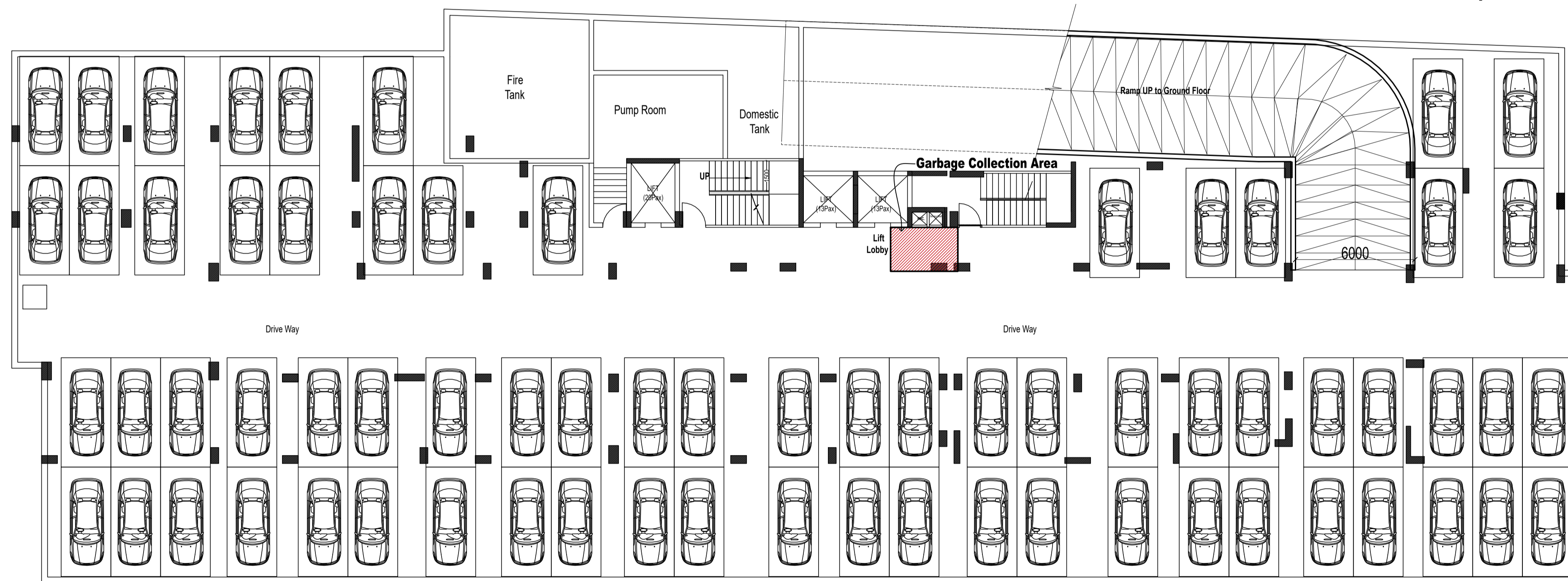


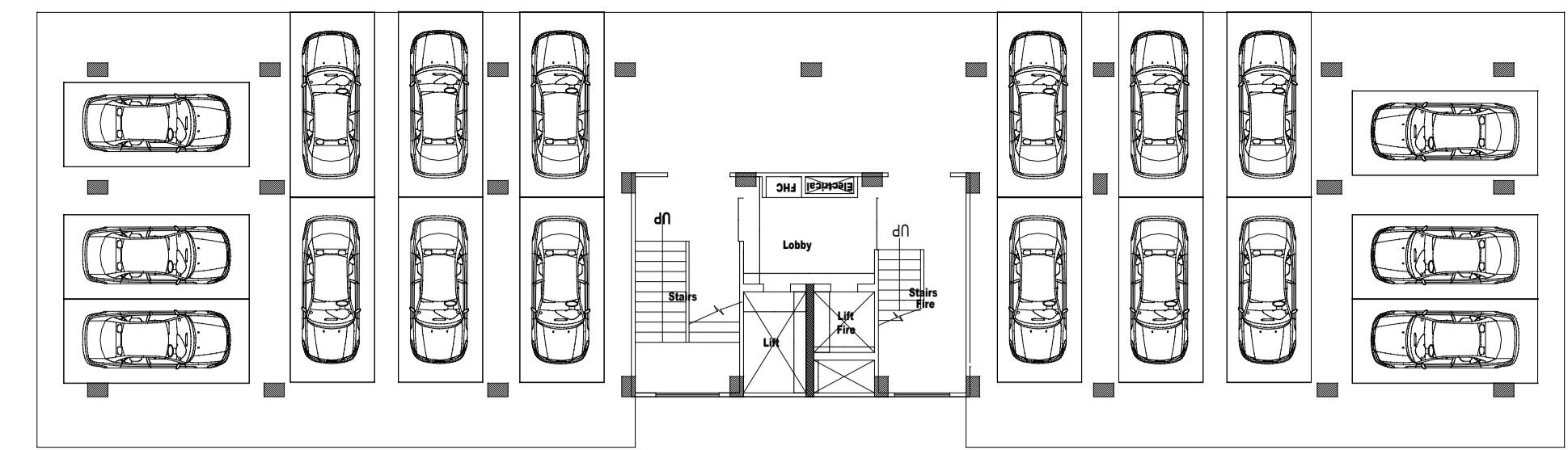
Typical floor plan 1st to 11th



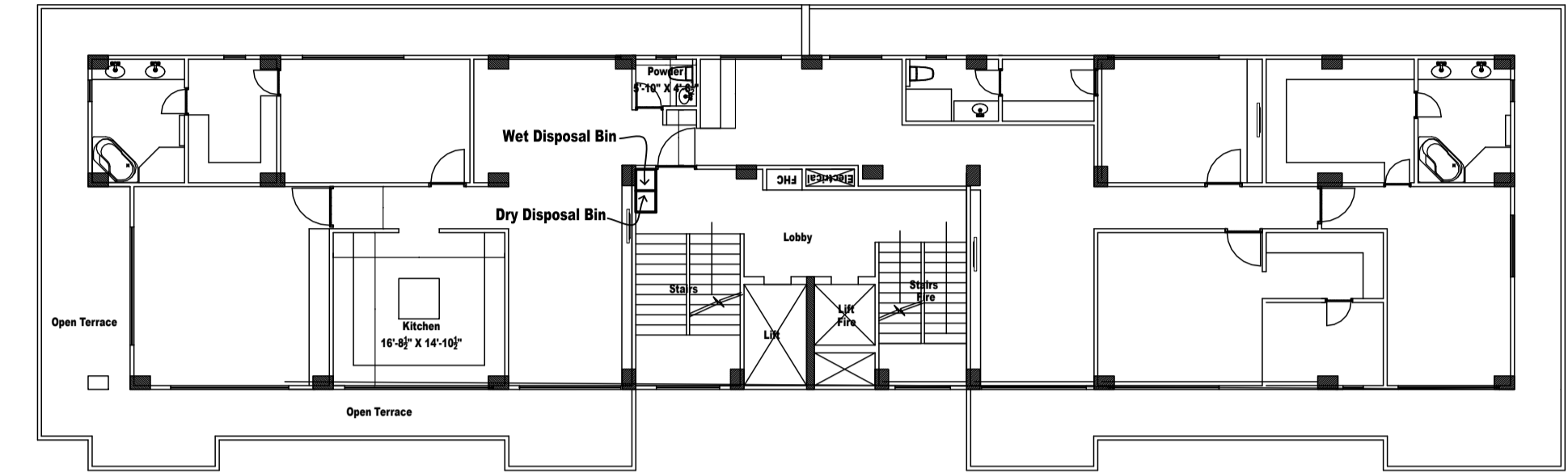
12th Floor plan



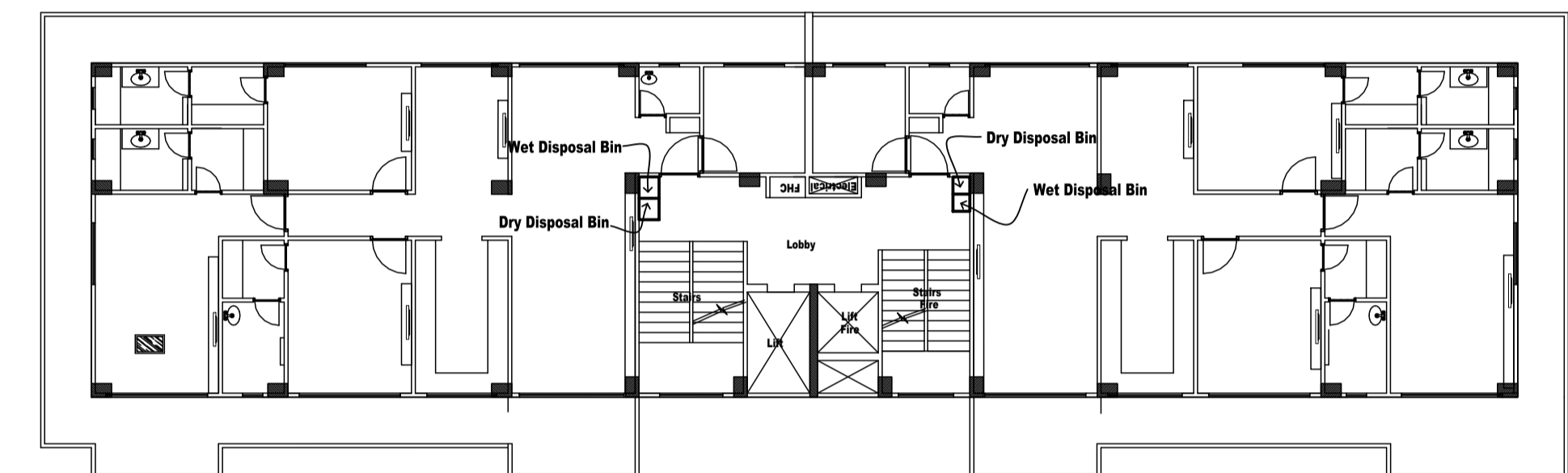
Basement plan



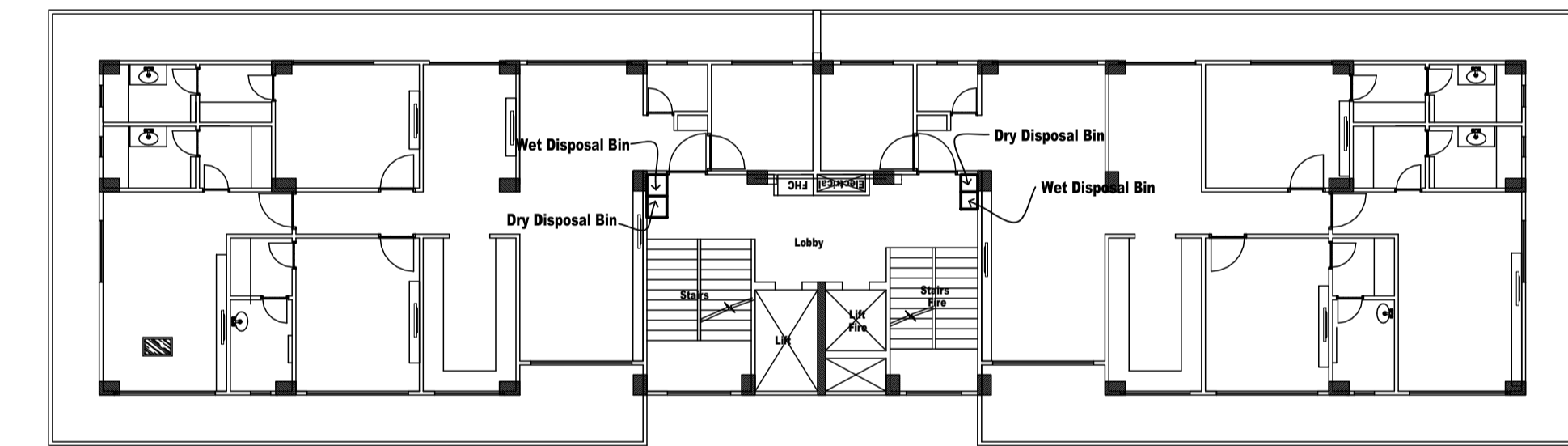
Stilt Floor Plan (Block A)



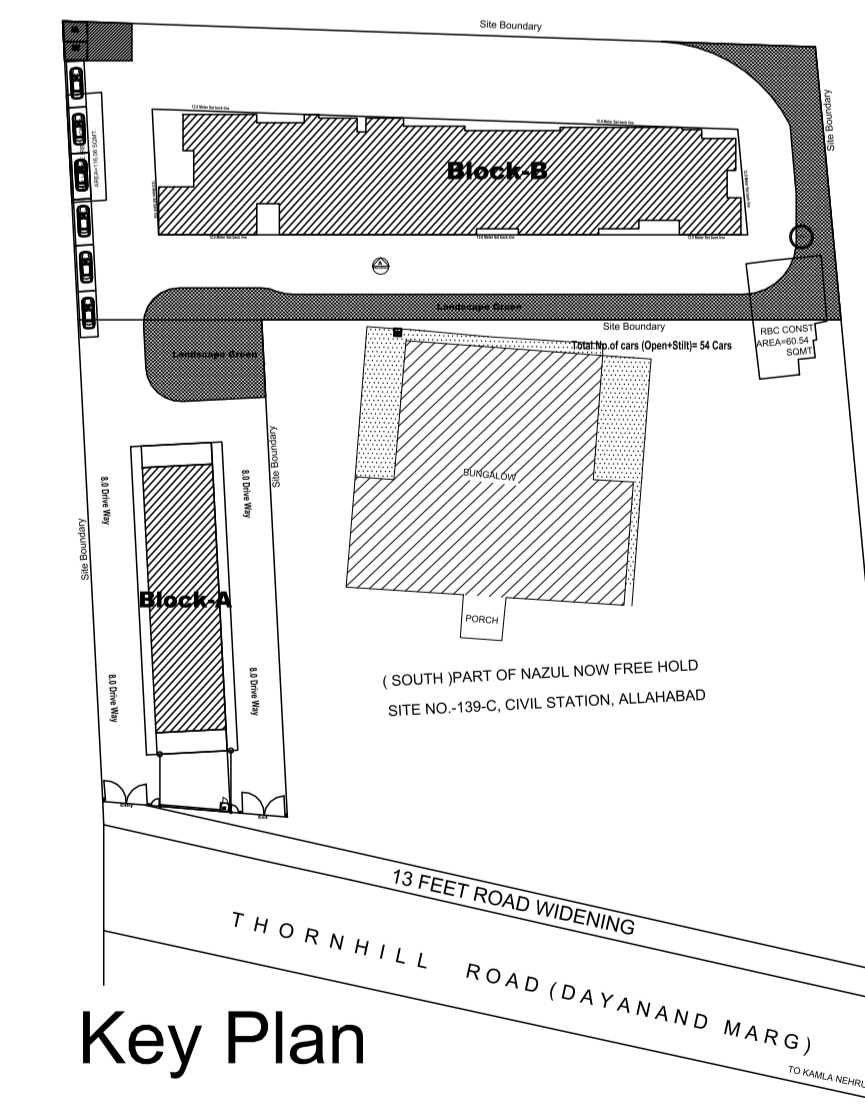
5th Floor Plan



Typical Floor Plan (2nd, 3rd, 4th)



1st Floor Plan



Key Plan

WASTE DISPOSAL

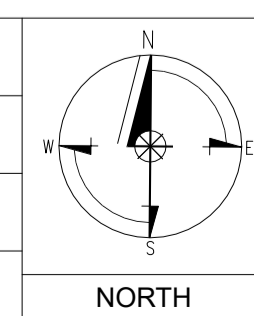
Block-A

Block A has 9 flats in 5 floors, 2 flats on 4 floors and a penthouse on the 5th floor. The garbage shall be handpicked from each flat. Each flat shall have 2 disposal bins for wet waste and dry waste and shall be collected separately.

Block-B

Block B has 56 flats in 12 floors with 5 flats on each floor. A vertical garbage chute is proposed which leads to the garbage collection in the basement. The garbage from the basement shall be collected by Municipal Corporation.

The waste collected from Block A and Block B shall be disposed off at waste disposal site earmarked for same.



Architect :
SHIVARPI KATOCH
 216, Second Floor, Ashirwad Complex
 Sector-29, Noida (U.P.)
 M : +91-9811720026
 Email: shivarpit@gmail.com

NO.	REVISION	DATE	NO.	ISSUED TO	NO.	REVISION	DATE	NO.	ISSUED TO

PROJECT: **PARK VIEW**
 VINAYAK ABHAYADATA
 TITLE: Waste Disposable Plan

Client :
 Vinayakkripa Abhaydata Ventures LLP
 Prayagraj

DRG NO :	RERA-01
DLT :	AK
APPD :	
SCALE :	NTS
DATE :	OCT. 2021