

**LEGEND :**

S. No.	SYMBOL	DESCRIPTION
1	M.H.	MANHOLE
2	—	SEWER LINE
3	- - -	BALANCE TREATED WATER LINE
4	C.P.	CATCH PIT
5	—	UNDERGROUND DRAIN
6	—	RAIN WATER HARVESTING
7	—	RECYCLED WATER SUPPLY PIPE LINE
8	—	RISING MAIN WATER PIPE LINE
9	—	MUNICIPAL WATER SUPPLY PIPE LINE
10	—	ISOLATING VALVE
11	—	MASONRY CHAMBER FOR ISOLATING VALVE
12	—	PROPOSED TUBE WELL
13	—	BASEMENT LINE
14	GH	GARDEN HYDRANT

**LEGEND : FIRE SYSTEM**

S. No.	SYMBOL	DESCRIPTION
1.	—	FIRE LINE
2.	YH	YARD HYDRANT 63 M.M. DIA. SINGLE HEADED HYDRANT VALVE WITH 2 NOS. 15 L.L. LONG, 63 M.M. DIA. FIRE HOSE PIPE & 1 NO. BRANCH PIPE WITH NOZZLE
3.	—	FIRE BRIGADE CONNECTION
4.	—	BUTTERFLY VALVE
5.	—	NONRETURN VALVE (CHECK VALVE)
6.	—	ISOLATING VALVE WITH MASONRY CHAMBER

**Project**  
**PROPOSED "VVIP YAMUNA" GROUP HOUSING**  
 AT PLOT NO. GH-01/02, SECTOR-20, YAMUNA  
 EXPRESSWAY INDUSTRIAL DEVELOPMENT  
 AUTHORITY (EIDA), G. B. NAGAR (I.P.)

**Title**  
**SITE PLAN (Authority Submission)**  
**EXTERNAL COMBINED SERVICES**

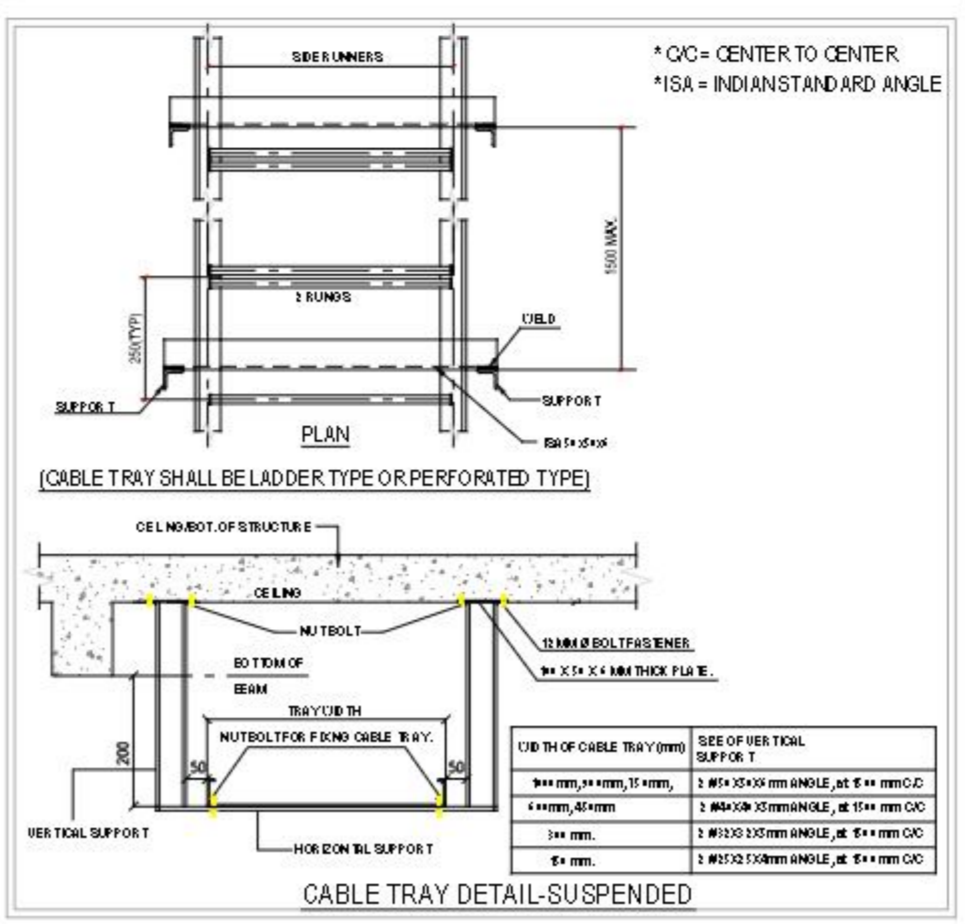
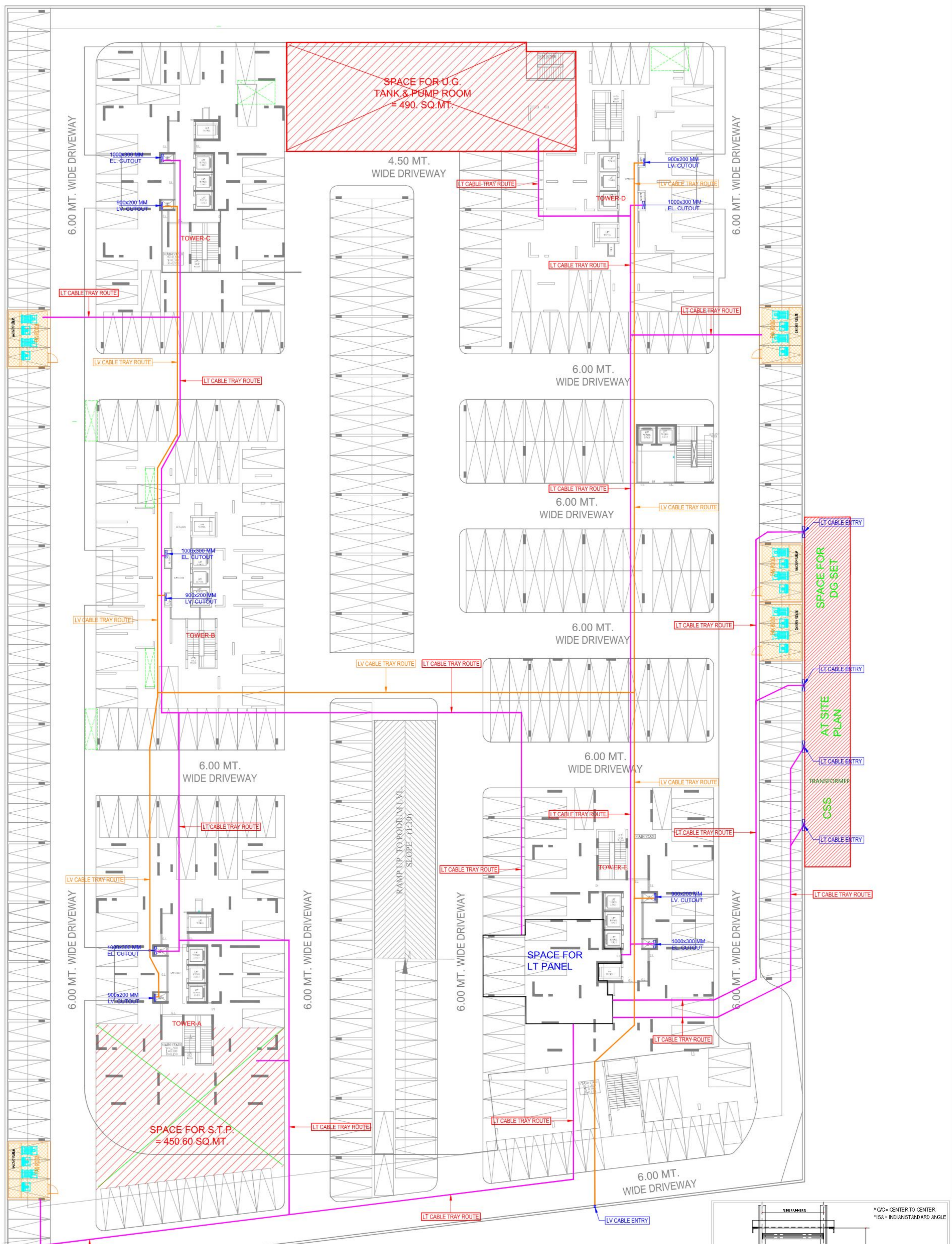
**Drawing released for**  
 APPROVAL  
 ADVANCE COPY  
 SUBMISSION  
 CONSTRUCTION

**Drg. no.**  
 VVIPYA / EX / S-05  
**Scale**  
 1 : 310  
**Date**  
 Sep. 2025

**Drawn by**  
 Kurbant  
**Designed by**  
 R.K.  
**Checked by**  
 Anand Havella

**Architects**  
**Space Designers International**  
 B-34, SECTOR-67, NOIDA  
 PH : +91 9711633717, 18, 19 & 20  
 Mob: 9811070399, 9811336231  
 e-mail : spacesdi@gmail.com, www.spacedi.com

**Services Consultant**  
**Cespl Consultants Pvt. Ltd.**  
 B-67, Sector-67, Noida - 201301  
 Tel : (0120) 3224400 / 3224401  
 e-mail : mail@cespl.in, website : www.cespl.in



**LEGEND : ( Cable Tray System )**

S. No.	SYMBOL	DESCRIPTION
1.		PERFORATED TYPE CABLE TRAY FOR LT CABLES
2.		PERFORATED TYPE CABLE TRAY FOR LV CABLES



**OWNER'S SIGNATURE**      **ARCHITECT'S SIGNATURE**

**BUILDERS & PROMOTERS :-**  
 VVP INFRAHOME PRIVATE LIMITED  
 (Formerly known as Luckhwal Properties Private Limited)  
 REGISTERED OFFICE OF THE COMPANY: S-68/59,  
 SCHOOL BLOCK, SHARAPUR, DELHI, 110082

**project**  
 PROPOSED "VVP YAMUNA" GROUP HOUSING  
 AT PLOT NO. GH-01B/2, SECTOR-22D, YAMUNA  
 EXPRESSWAY INDUSTRIAL DEVELOPMENT  
 AUTHORITY (YEIDA), G. B. NAGAR (U.P.)

**title**  
 EXTERNAL ELECTRICAL DRAWING

**subtitle**  
 CABLE TRAY ROUTE LAYOUT  
 (BASEMENT)

**drawing released for**

- APPROVAL
- ADVANCE COPY
- SUBMISSION
- CONSTRUCTION

**drg. no.**  
 WFP/Y/BAS. CT/EXT./EL-01

**scale**  
 A1 @ 1:250

**date**  
 Dec.2025

**drawn by**      Samsheer Singh

**designed by**      Satyam Sharma

**checked by**      Anand Havelia

**architects**  
 Space Designers International  
 B-34, SECTOR-67, NOIDA  
 PH: +91 9711 63271, 71613 9 & 20  
 MO: 9811 070398, 9811 336231  
 e-mail: spacedi@spacedi.com, www.spacedi.com

**services consultant**  
 Consummate Engineering Services (P) Ltd.  
 Noida Office: B-67, Sector-67, Noida - 201 301  
 Tel: (0120) 2993500 (30 Lines)  
 Uda. Office: R-006, Rohas Purnima, Gomti Nagar, Lucknow  
 Tel: (0522) 69 5495  
 e-mail: mail@cespi.in, web site: www.cespi.in