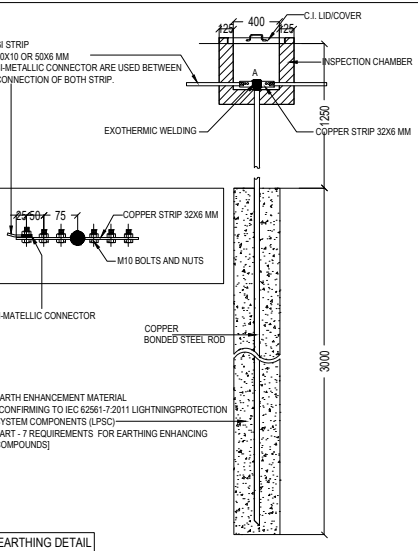
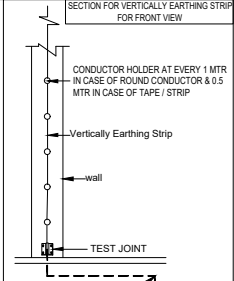
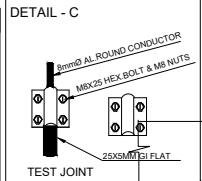
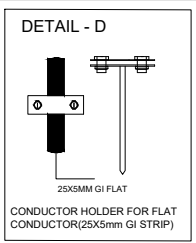
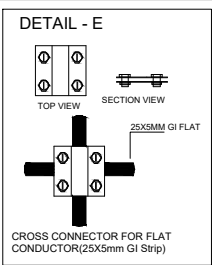
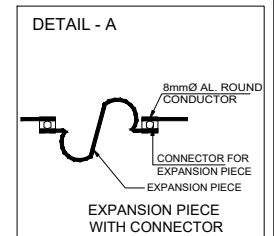
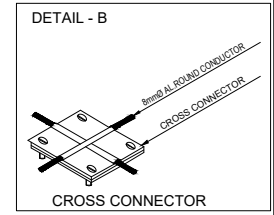


**LEGEND :**

S. No.	SYMBOL	DESCRIPTION
1.		COPPER BONDED ROD EARTHING
2.		FLAT CONDUCTOR (25 X 5 MM GI STRIP)
3.		20 X 3 MM GI STRIP / TAPE / 8 MM ALUMINIUM ROPE
4.		EXPANSION PIECE WITH CONNECTOR
5.		TEST JOINT
6.		CROSS CONNECTOR
7.		CROSS CONNECTOR FOR FLAT
8.		2MTR VERTICAL AIRTERMINAL
9.		DOWN CONDUCTOR
10.		CONDUCTOR HOLDER - VERTICALLY - AT EVERY 1 MTR IN CASE OF ROUND CONDUCTOR & 0.5 MTR IN CASE OF TAPE / STRIP HORIZONTAL - AT EVERY 1 MTR IN CASE OF ROUND CONDUCTOR & TAPE / STRIP



**EXTERNAL LIGHTNING PROTECTION & EARTHING SYSTEM AS PER IS-IEC 62305-3 LEVEL III**



**SHEET TITLE**

ELECTRICITY SUPPLY LAYOUT

**OWNER:** STARCITY BUILDCON PRIVATE LIMITED  
PLOT NO. GH-14  
SECTOR 01  
GREATER NOIDA

**PROJECT:** PROPOSED GROUP HOUSING AT PLOT NO. GH-14  
SECTOR 01  
GREATER NOIDA

**CONSULTANTS:**  
Consummate Engineering Services (P) Ltd.  
Noida Office: (B-15, Sector-45, Noida-201 301)  
Tel: (91) 226 230330 (30 Lines)  
1st Floor, Office: 9/106, Noida, Phase-1, Greater Noida, Lucknow  
e-mail: mail@cespln, website: www.cespln

**ARCHITECT'S SIGNATURE:**  
  
**OWNER'S SIGNATURE:**

<b>DRAWN BY:</b>	<b>SCALE:</b> 1:100	<b>DATE:</b>	<b>ORIGIN:</b>	<b>NORTH:</b>
<b>CHECKED BY:</b>				