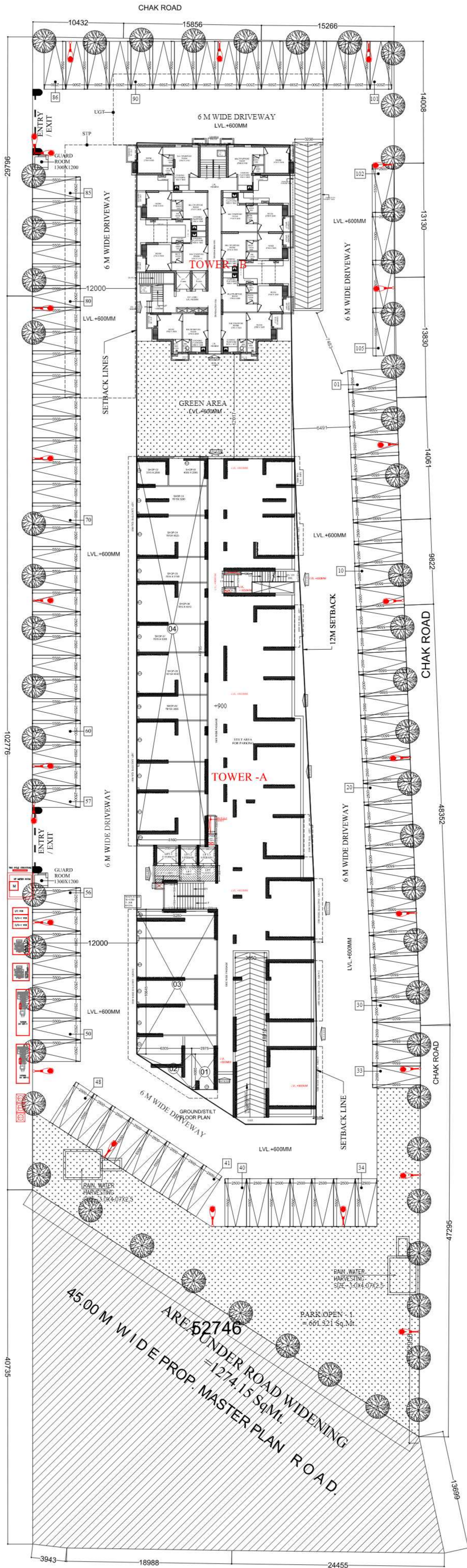
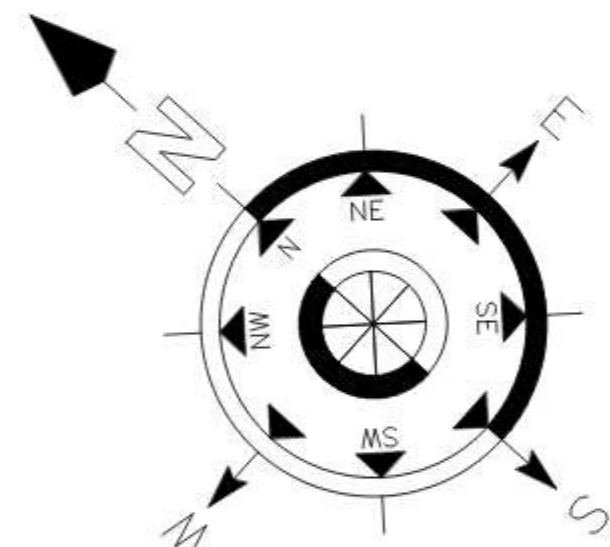


45.00 M WIDE PROP. MASTER PLAN ROAD.



SR.NO	SYMBOL	DESCRIPTION
01.		LED 60W STREET LIGHT ON 6 METER POLE



COPY	REV.	DATE	REVISION/ISSUED TO

PROJECT :-
'SHRIRAM NORTH VIEW APARTMENTS UNDER PMAY' SITUATED ON KHASRA NO. 1174(P), AT VILL. NOOR NAGAR, PARAGNA - LONI, TEHSIL & DISTT. GHAZIABAD

BUILDERS & PROMOTER :-
 1) M/S ROCKFORT DEVELOPERS PVT. LTD.
 2) M/S G. S. A. ENTERPRISES PVT. LTD.
Regd. Office: 106, Sasco Bhawan, Azadpur Commercial Complex, Azadpur, Delhi-110033

- THIS DRAWING IS THE PROPERTY OF VASTUSHILP DESIGN AND IS NOT TO BE USED FOR ANY PURPOSE OTHER THAN FOR WHICH IT IS ISSUED WITH OUT PERMISSION OF ITS PRINCIPALS.
- THIS DRAWING IS TO BE READ IN CONJUNCTION WITH OTHER RELEVANT ARCHITECTURAL, STRUCTURAL AND OTHER SERVICES' CONSULTANTS DRAWING. IT SHALL BE THE DEEMED RESPONSIBILITY OF THE CONTRACTOR/ FABRICATOR TO BRING IN TO NOTICE OF ARCHITECTS IF ANY DISCREPANCY WITHIN OR BETWEEN THE DRAWINGS PRIOR TO CONSTRUCTION.
- ALL WRITTEN DIMENSIONS ARE TO BE FOLLOWED AND THE DRAWING IS NOT TO BE SCALED.

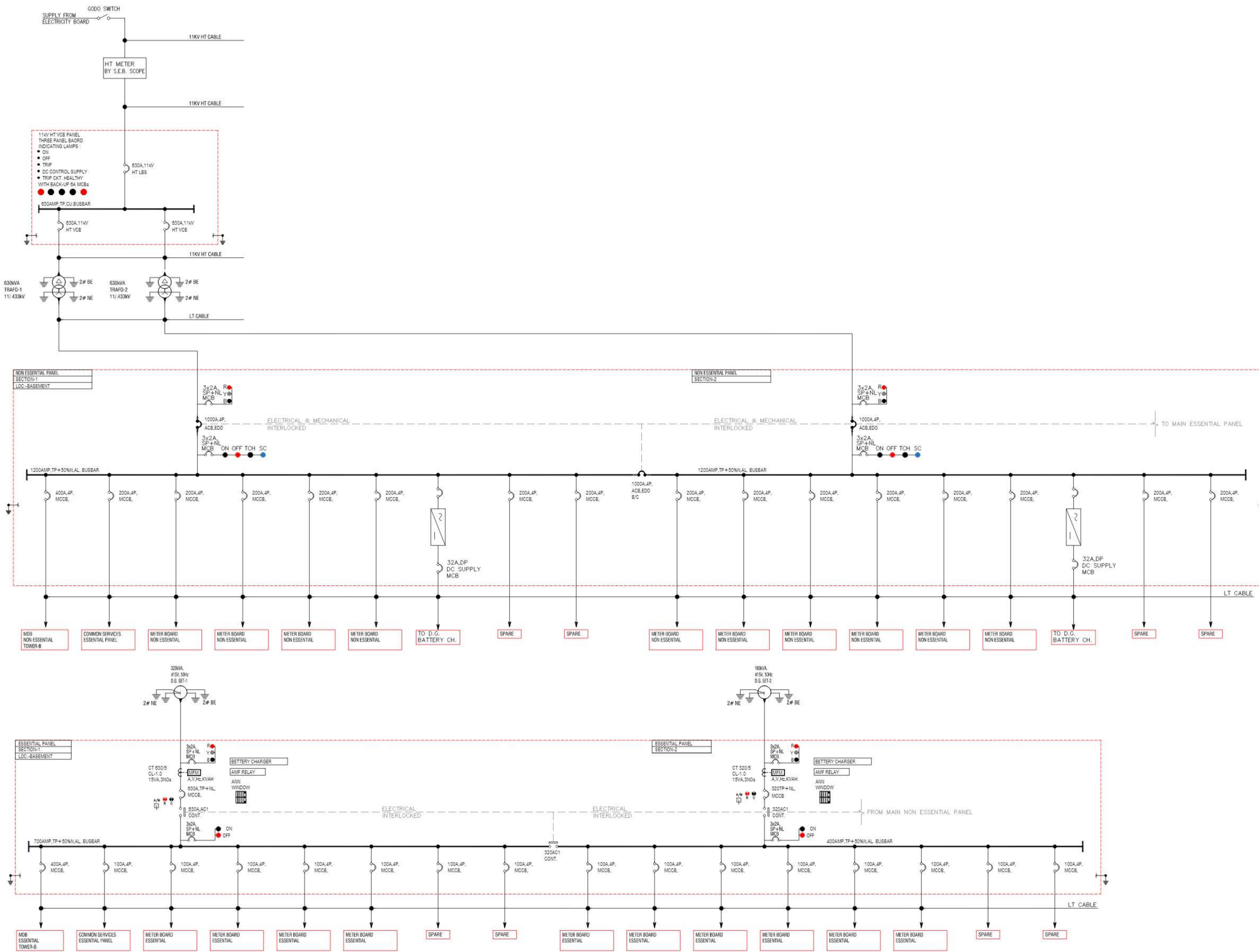
DRAWING TITLE :- SITE PLAN
 ELEC. SPACE LAYOUT

VASTUSHILP DESIGN
 ARCHITECTS, PLANNERS, LANDSCAPE, INTERIOR DESIGNER, VALUERS & VASTU CONSULTANTS
 Mob : +91 - 7838758900
 MAIL : vsdarchitects@gmail.com
 WEB : www.vsdarchitects.com
 GROUND FLOOR, PLOT No 180, SECTOR 10A, VASUNDHARA GHAZIABAD, PIN 201012

C E M G ARCHITECTS
 NCR Office :- Plot No.-22, 104-1st Floor, Shaktikhand-2, Indraprastha, Ghaziabad, U.P.
 Tel :- +91 120 4122793, 4010555, Mo. +91 8800654107
 Agra Office :- I Floor, Elora Complex, Khandari King, Surya Nagar, Agra 202 002, U.P. India
 Tel :- +91 562 2520383, 4010555, Mo. +91 9837035786
 E-mail :- cemgdelhi@gmail.com, cemgagra@gmail.com
 Web :- www.cemgindia.com

ELECTRICAL SERVICES CONSULTANT
ECMS INDIA PVT. LTD.
 WP-21 C-282, BASEMENT
 NOIDA SECTOR-71,
 UTTAR PRADESH-201307
 E-mail: ecms.tech01@gmail.com
 URL: www.ecmsindia.com

OWNER'S SIGN 	ARCHITECT'S SIGN.
DRAWN BY :- Ar. Dheeraj Kumar	CHECKED BY :- Ar. Mohit Shukla
DRG. NO. :- SRNV-SP-01	DATED :- 19.04.2023



COPY	REV.	DATE	REVISION/ISSUED TO

MEP CONSULTANT
BEHERA ASSOCIATES PVT. LTD.
 F-623a, BEHIND, CNG FILLING STATION,
 LADO SARAI, NEW DELHI 110030
 PH: - 011-40583898, 09811911853
 E mail: - behera.associates@gmail.com

PROJECT :-
'SHIRAM NORTH VIEW APARTMENTS UNDER PMAY' SITUATED ON KHASRA NO. 1174(P), AT VILL. NOOR NAGAR, PARAGNA - LONI, TEHSIL & DISTT. GHAZIABAD

BUILDERS & PROMOTER :-
 1) M/S ROCKFORT DEVELOPERS PVT. LTD.
 2) M/S G. S. A. ENTERPRISES PVT. LTD.
 Regd. Office: 106, Sasco Bhawan, Azadpur Commercial Complex, Azadpur, Delhi-110033

- THIS DRAWING IS THE PROPERTY OF VASTUSHILP DESIGN AND IS NOT TO BE USED FOR ANY PURPOSE OTHER THAN FOR WHICH IT IS ISSUED WITH OUT PERMISSION OF ITS PRINCIPALS.
- THIS DRAWING IS TO BE READ IN CONJUNCTION WITH OTHER RELEVANT ARCHITECTURAL, STRUCTURAL AND OTHER SERVICES' CONSULTANTS DRAWING. IT SHALL BE THE DEEMED RESPONSIBILITY OF THE CONTRACTOR/FABRICATOR TO BRING IN TO NOTICE OF ARCHITECTS IF ANY DISCREPANCY WITHIN OR BETWEEN THE DRAWINGS PRIOR TO CONSTRUCTION.
- ALL WRITTEN DIMENSIONS ARE TO BE FOLLOWED AND THE DRAWING IS NOT TO BE SCALED.

DRAWING TITLE :-
ELECTRICAL SLD

VASTUSHILP DESIGN
 ARCHITECTS, PLANNERS, LANDSCAPE, INTERIOR DESIGNER, VALUERS & VASTU CONSULTANTS
 Mob: +91 - 7838758900
 Mail: - vsdarchitects@gmail.com
 Web: - www.vsdarchitects.com
 GROUND FLOOR, PLOT NO 180, SECTOR 10A, VASUNDHARA GHAZIABAD, PIN 201012.

C E M G ARCHITECTS
 NOR Office - Plot No- 22, 104-1st Floor, ShaktiKhand-2, Indraprastha, Ghaziabad, UP
 Tel: - +91 120 4122793, 4010655, Mo: +91 9800654107
 Agr. Office - 1 Floor, Ekta Complex, Akhandar, Agra
 Sany Nagar, Agra 202 002, U.P. India
 Tel: - +91 562 2520383, 4010655, Mo: +91 9837030786
 E-mail: - ccmg.agra@gmail.com, ccmg.agra@gmail.com
 Web: - www.ccmgindia.com

ELECTRICAL SERVICES CONSULTANT
ECMS INDIA PVT. LTD.
 WP-21 C-282, BASEMENT
 NOIDA SECTOR-71,
 UTTAR PRADESH-201307
 E-mail: - ecms.tech01@gmail.com
 URL: - www.ecmsindia.com

OWNER'S SIGN	ARCHITECT'S SIGN

DRAWN BY: Ar. Dhruvraj Kumar	CHECKED BY: Ar. Mohit Shukla	DRG. NO.: SRVW-SP-01	DATE: 19.04.2023
---------------------------------	---------------------------------	-------------------------	---------------------

PROJECT NAME: SHRI RAM NORTHVIEW APARTMENTS				
Sl. No.	Description	Connected Load (kW)	Qty	Diversity
A Residential Load				
1	Tower-A (Residential Area)	668.68	1	0.5
2	Tower-A (Commercial Area)	77.09	1	0.75
3	Tower-B (Residential Area)	172.51	1	0.5
Total				
B Common Services Load				
1	Plumbing Load	31.66	1.00	0.85
2	STP	14.90	1.00	1.00
3	Fire Pump	149.00	1.00	1.00
4	Jockey Pump	22.35	1.00	1.00
5	Fire Water Curtain Pump	11.18	1.00	1.00
6	External Lighting & Guard Room	5.00	1.00	1.00
7	Lift	7.50	5.00	0.80
8	EV Charging (Assumed)	100.00	2.00	0.80
9	Common Area Load	20.00	1.00	0.60
Total				
Grand Total				
C TRANSFORMER SELECTION				
i	Apply Power Factor			0.9
ii	Maximum Load Factor			80%
Hence, Transformer Selected		2 No. 630kVA		
D DG SELECTION				
1	Apartments (1kVA per unit)	0.80	424.00	0.80
2	Common Servces except EV Charging	111.16	1.00	0.80
Total				
i	Apply Power Factor			0.8
ii	Maximum Load Factor			90%
Hence, Transformer Selected		1 No. 320kVA & 1 No. 180k		

Demand Load (kW)
334.34
57.81
86.26
478.41kW
26.91
14.90
Dead Load
22.35
Dead Load
5.00
30.00
160.00
12.00
271.16kW
749.57kW
833kVA
1041kVA
271.36
88.93
360.29kW
450kVA
500kVA
VA

PROJECT NAME: SHRI RAM NORTHVIEW APARTMENTS
DETAILED ELECTRICAL LOAD CALCULATION SHEET AS PER UPPL GUIDELINES

S.No	Description	Apt. Type	No. of Floors	Per Floor FAR Area (Sq.Mtr.)	Watts (Each)	Demand Load (KW)	Total Demand Load (KW)
LOAD SUMMARY & EQUIPMENT SELECTION							
A	Tower-A						
1	Stilt Floor						
1.1	SHOP 01	Shop	1	10.21	1531.44	1500W/10Sqam	1.53
1.2	SHOP 02	Shop	1	14.14	2121.24	1500W/10Sqam	2.12
1.3	SHOP 03	Shop	1	26.39	3958.14	1500W/10Sqam	3.96
1.4	SHOP 04	Shop	1	37.33	5599.32	1500W/10Sqam	5.60
1.5	SHOP 05	Shop	1	22.81	3421.14	1500W/10Sqam	3.42
1.6	SHOP 06	Shop	1	37.33	5599.32	1500W/10Sqam	5.60
1.7	SHOP 07	Shop	1	25.46	3819.36	1500W/10Sqam	3.82
1.8	SHOP 08	Shop	1	38.25	5738.10	1500W/10Sqam	5.74
1.9	SHOP 09	Shop	1	22.81	3421.14	1500W/10Sqam	3.42
1.10	SHOP 10	Shop	1	37.33	5599.32	1500W/10Sqam	5.60
1.11	SHOP 11	Shop	1	26.39	3958.14	1500W/10Sqam	3.96
1.12	SHOP 12	Shop	1	49.20	7379.28	1500W/10Sqam	7.38
1.13	SHOP 13	Shop	1	27.95	4192.99	1500W/10Sqam	4.19
1.14	SHOP 14	Shop	1	41.88	6282.61	1500W/10Sqam	6.28
1.15	SHOP 15	Shop	1	25.80	3869.92	1500W/10Sqam	3.87
1.16	SHOP 16	Shop	1	31.30	4694.77	1500W/10Sqam	4.69
1.17	SHOP 17	Shop	1	16.74	2511.15	1500W/10Sqam	2.51
1.18	SHOP 18	Shop	1	22.59	3389.03	1500W/10Sqam	3.39
	Total Load		18				77.09KW
2	1st Floor						
2.1	UNIT 01	3BHK	1	67.5	3375.00	500W/10Sqam	3.38
2.2	UNIT 02	3BHK	1	68.76	3438.00	500W/10Sqam	3.44
2.3	UNIT 03	2BHK	1	46.16	2308.00	500W/10Sqam	2.31
2.4	UNIT 04	2BHK	1	46.16	2308.00	500W/10Sqam	2.31
2.5	UNIT 05	2BHK	1	46.16	2308.00	500W/10Sqam	2.31
2.6	UNIT 06	2BHK	1	46.16	2308.00	500W/10Sqam	2.31
2.7	UNIT 07	2BHK	1	46.16	2308.00	500W/10Sqam	2.31
2.8	UNIT 08	1BHK	1	32.11	1605.50	500W/10Sqam	1.61
2.9	UNIT 09	1BHK	1	32.11	1605.50	500W/10Sqam	1.61
2.10	UNIT 10	2BHK	1	46.16	2308.00	500W/10Sqam	2.31
2.11	UNIT 11	2BHK	1	46.16	2308.00	500W/10Sqam	2.31
2.12	UNIT 12	2BHK	1	46.16	2308.00	500W/10Sqam	2.31
2.13	UNIT 13	2BHK	1	46.16	2308.00	500W/10Sqam	2.31
2.14	UNIT 14	2BHK	1	46.16	2308.00	500W/10Sqam	2.31
2.15	UNIT 15	3BHK	1	68.91	3445.50	500W/10Sqam	3.45
2.16	UNIT 16	3BHK	1	68.91	3445.50	500W/10Sqam	3.45
2.17	UNIT 17	3BHK	1	70.43	3521.50	500W/10Sqam	3.52
	Total Load		17				43.52KW
3	2nd to 12th Floor						
3.1	UNIT 01	3BHK	11	67.01	3350.50	500W/10Sqam	3.35
3.2	UNIT 02	3BHK	11	68.76	3438.00	500W/10Sqam	3.44
3.3	UNIT 03	2BHK	11	46.16	2308.00	500W/10Sqam	2.31
3.4	UNIT 04	2BHK	11	46.16	2308.00	500W/10Sqam	2.31
3.5	UNIT 05	2BHK	11	46.16	2308.00	500W/10Sqam	2.31
3.6	UNIT 06	2BHK	11	46.16	2308.00	500W/10Sqam	2.31
3.7	UNIT 07	2BHK	11	46.16	2308.00	500W/10Sqam	2.31
3.8	UNIT 08	1BHK	11	32.28	1614.00	500W/10Sqam	1.61
3.9	UNIT 09	1BHK	11	32.28	1614.00	500W/10Sqam	1.61
3.10	UNIT 10	2BHK	11	46.16	2308.00	500W/10Sqam	2.31
3.11	UNIT 11	2BHK	11	46.16	2308.00	500W/10Sqam	2.31
3.12	UNIT 12	2BHK	11	46.16	2308.00	500W/10Sqam	2.31
3.13	UNIT 13	2BHK	11	46.16	2308.00	500W/10Sqam	2.31
3.14	UNIT 14	2BHK	11	46.16	2308.00	500W/10Sqam	2.31
3.15	UNIT 15	3BHK	11	68.76	3438.00	500W/10Sqam	3.44
3.16	UNIT 16	3BHK	11	68.76	3438.00	500W/10Sqam	3.44
3.17	UNIT 17	3BHK	11	70.43	3521.50	500W/10Sqam	3.52
	Total Load		187				478.43KW
4	13th Floor						
4.1	UNIT 01	2BHK	1	62.98	2649.00	500W/10Sqam	2.65
4.2	UNIT 02	3BHK	1	61.98	3099.00	500W/10Sqam	3.10
4.3	UNIT 03	2BHK	1	41.41	2070.50	500W/10Sqam	2.07
4.4	UNIT 04	2BHK	1	41.41	2070.50	500W/10Sqam	2.07
4.5	UNIT 05	2BHK	1	41.41	2070.50	500W/10Sqam	2.07
4.6	UNIT 06	2BHK	1	41.41	2070.50	500W/10Sqam	2.07
4.7	UNIT 07	3BHK	1	69.46	3473.00	500W/10Sqam	3.47
4.8	UNIT 08	3BHK	1	70.39	3519.50	500W/10Sqam	3.52
4.9	UNIT 09	2BHK	1	46.16	2308.00	500W/10Sqam	2.31
4.10	UNIT 10	2BHK	1	46.16	2308.00	500W/10Sqam	2.31
4.11	UNIT 11	2BHK	1	46.16	2308.00	500W/10Sqam	2.31
4.12	UNIT 12	2BHK	1	46.16	2308.00	500W/10Sqam	2.31
4.13	UNIT 13	3BHK	1	61.98	3099.00	500W/10Sqam	3.10

4.14	UNIT 14	3BHK	1	61.98	3099.00	500W/10Sqm	3.10	3.10
4.15	UNIT 15	3BHK	1	60.16	3008.00	500W/10Sqm	3.01	3.01
Total Load			15					39.46kW
5 14th Floor								
5.1	UNIT 01	2BHK	1	52.98	2649.00	500W/10Sqm	2.65	2.65
5.2	UNIT 02	3BHK	1	61.98	3099.00	500W/10Sqm	3.10	3.10
5.3	UNIT 03	2BHK	1	41.41	2070.50	500W/10Sqm	2.07	2.07
5.4	UNIT 04	2BHK	1	41.41	2070.50	500W/10Sqm	2.07	2.07
5.5	UNIT 05	2BHK	1	41.41	2070.50	500W/10Sqm	2.07	2.07
5.6	UNIT 06	2BHK	1	41.41	2070.50	500W/10Sqm	2.07	2.07
5.7	UNIT 07	3BHK	1	69.46	3473.00	500W/10Sqm	3.47	3.47
5.8	UNIT 08	3BHK	1	70.39	3519.50	500W/10Sqm	3.52	3.52
5.9	UNIT 09	2BHK	1	46.16	2308.00	500W/10Sqm	2.31	2.31
5.10	UNIT 10	2BHK	1	46.16	2308.00	500W/10Sqm	2.31	2.31
5.11	UNIT 11	2BHK	1	46.16	2308.00	500W/10Sqm	2.31	2.31
5.12	UNIT 12	2BHK	1	46.16	2308.00	500W/10Sqm	2.31	2.31
5.13	UNIT 13	3BHK	1	61.98	3099.00	500W/10Sqm	3.10	3.10
5.14	UNIT 14	3BHK	1	61.98	3099.00	500W/10Sqm	3.10	3.10
5.15	UNIT 15	3BHK	1	60.16	3008.00	500W/10Sqm	3.01	3.01
Total Load			15					39.46kW
6 15th Floor								
6.1	UNIT 01	2BHK	1	42.75	2137.50	500W/10Sqm	2.14	2.14
6.2	UNIT 02	2BHK	1	55.08	2754.00	500W/10Sqm	2.75	2.75
6.3	UNIT 03	2BHK	1	36.78	1839.00	500W/10Sqm	1.84	1.84
6.4	UNIT 04	2BHK	1	36.78	1839.00	500W/10Sqm	1.84	1.84
6.5	UNIT 05	2BHK	1	36.78	1839.00	500W/10Sqm	1.84	1.84
6.6	UNIT 06	2BHK	1	36.78	1839.00	500W/10Sqm	1.84	1.84
6.7	UNIT 07	2BHK	1	55.91	2795.50	500W/10Sqm	2.80	2.80
6.8	UNIT 08	2BHK	1	56.86	2843.00	500W/10Sqm	2.84	2.84
6.9	UNIT 09	2BHK	1	41.42	2071.00	500W/10Sqm	2.07	2.07
6.10	UNIT 10	2BHK	1	41.42	2071.00	500W/10Sqm	2.07	2.07
6.11	UNIT 11	2BHK	1	41.42	2071.00	500W/10Sqm	2.07	2.07
6.12	UNIT 12	2BHK	1	41.42	2071.00	500W/10Sqm	2.07	2.07
6.13	UNIT 13	2BHK	1	55.08	2754.00	500W/10Sqm	2.75	2.75
6.14	UNIT 14	2BHK	1	55.08	2754.00	500W/10Sqm	2.75	2.75
6.15	UNIT 15	1BHK	1	44.49	2224.50	500W/10Sqm	2.22	2.22
Total Load			15					33.50kW
7 16th Floor								
7.1	UNIT 01	2BHK	1	42.75	2137.50	500W/10Sqm	2.14	2.14
7.2	UNIT 02	2BHK	1	55.08	2754.00	500W/10Sqm	2.75	2.75
7.3	UNIT 03	2BHK	1	74.02	3701.00	500W/10Sqm	3.70	3.70
7.4	UNIT 04	2BHK	1	74.02	3701.00	500W/10Sqm	3.70	3.70
7.5	UNIT 05	2BHK	1	55.91	2795.50	500W/10Sqm	2.80	2.80
7.6	UNIT 06	2BHK	1	56.86	2843.00	500W/10Sqm	2.84	2.84
7.7	UNIT 07	2BHK	1	81.9	4095.00	500W/10Sqm	4.10	4.10
7.8	UNIT 08	2BHK	1	41.42	2071.00	500W/10Sqm	2.07	2.07
7.9	UNIT 09	2BHK	1	41.42	2071.00	500W/10Sqm	2.07	2.07
7.10	UNIT 10	2BHK	1	55.08	2754.00	500W/10Sqm	2.75	2.75
7.11	UNIT 11	2BHK	1	55.08	2754.00	500W/10Sqm	2.75	2.75
7.12	UNIT 12	1BHK	1	44.49	2224.50	500W/10Sqm	2.22	2.22
Total Load			28					33.50kW
Grand Load			277					668.68kW

B	Tower-B							
8	Ground Floor							
8.1	UNIT 01	1BHK	1	22.1	1105.00	500W/10Sqm	1.11	1.11
8.2	UNIT 02	1BHK	1	23.52	1176.00	500W/10Sqm	1.18	1.18
8.3	UNIT 03	1BHK	1	23.52	1176.00	500W/10Sqm	1.18	1.18
8.4	UNIT 04	1BHK	1	24.71	1235.50	500W/10Sqm	1.24	1.24
8.5	UNIT 05	1BHK	1	24.68	1234.00	500W/10Sqm	1.23	1.23
8.6	UNIT 06	1BHK	1	23.52	1176.00	500W/10Sqm	1.18	1.18
8.7	UNIT 07	1BHK	1	23.52	1176.00	500W/10Sqm	1.18	1.18
8.8	UNIT 08	1BHK	1	23.52	1176.00	500W/10Sqm	1.18	1.18
8.9	UNIT 09	1BHK	1	22.64	1132.00	500W/10Sqm	1.13	1.13
	Total Load		9					10.59KW
9	1st to 13th Floor							
9.1	UNIT 01	1BHK	13	22.1	1105.00	500W/10Sqm	1.11	14.37
9.2	UNIT 02	1BHK	13	23.52	1176.00	500W/10Sqm	1.18	15.29
9.3	UNIT 03	1BHK	13	23.52	1176.00	500W/10Sqm	1.18	15.29
9.4	UNIT 04	1BHK	13	24.71	1235.50	500W/10Sqm	1.24	16.06
9.5	UNIT 05	1BHK	13	24.68	1234.00	500W/10Sqm	1.23	16.04
9.6	UNIT 06	1BHK	13	23.52	1176.00	500W/10Sqm	1.18	15.29
9.7	UNIT 07	1BHK	13	23.52	1176.00	500W/10Sqm	1.18	15.29
9.8	UNIT 08	1BHK	13	23.52	1176.00	500W/10Sqm	1.18	15.29
9.9	UNIT 09	1BHK	13	22.64	1132.00	500W/10Sqm	1.13	14.72
	Total Load		117					137.62KW
10	14th Floor							
10.1	UNIT 01	1BHK	1	22.1	1105.00	500W/10Sqm	1.11	1.11
10.2	UNIT 02	1BHK	1	22.19	1109.50	500W/10Sqm	1.11	1.11
10.3	UNIT 03	1BHK	1	22.19	1109.50	500W/10Sqm	1.11	1.11
10.4	UNIT 04	1BHK	1	26.5	1425.00	500W/10Sqm	1.43	1.43
10.5	UNIT 05	1BHK	1	22.19	1109.50	500W/10Sqm	1.11	1.11
10.6	UNIT 06	1BHK	1	22.19	1109.50	500W/10Sqm	1.11	1.11
10.7	UNIT 07	1BHK	1	22.64	1132.00	500W/10Sqm	1.13	1.13
	Total Load		7					8.10KW
11	15th to 16th Floor							
11.1	UNIT 01	1BHK	2	22.1	1105.00	500W/10Sqm	1.11	2.21
11.2	UNIT 02	1BHK	2	22.19	1109.50	500W/10Sqm	1.11	2.22
11.3	UNIT 03	1BHK	2	22.19	1109.50	500W/10Sqm	1.11	2.22
11.4	UNIT 04	1BHK	2	26.5	1425.00	500W/10Sqm	1.43	2.85
11.5	UNIT 05	1BHK	2	22.19	1109.50	500W/10Sqm	1.11	2.22
11.6	UNIT 06	1BHK	2	22.19	1109.50	500W/10Sqm	1.11	2.22
11.7	UNIT 07	1BHK	2	22.64	1132.00	500W/10Sqm	1.13	2.26
	Total Load		14					16.20KW
	Grand Total Load		147					172.51KW

PROJECT:- SHRIRAM NORTH VIEW APARTMENT
SUBJECT:- PLUMBING SERVICES

ELECTRICAL LOAD CALCULATION

SLNO	DESCRIPTION	LOCATION	NO OF PUMPS		HP OF PUMP	ELECTRICAL LOAD		ELECTRICAL LOAD	
			WORKING	STANDBY		WORKING	CONNECTED	WORKING	CONNECTED
								KW	KW
1	BORE WELL PUMP	SITE	1	1	5	5	10	3.725	7.45
2	DOMESTIC WATER TRASFER PUMP	UGT	1	1	7.5	7.5	15	5.5875	11.175
3	FILTER FEED PUMP	UGT	1	1	5	5	10	3.725	7.45
4	FIRE PUMP (ELECTRICAL& SPRINKLER - DEAD LOAD)	UGT	2	0	100	200	200	149	149
5	FIRE PUMP JOCKEY (ELECTRICAL - DEAD LOAD)	UGT	2	0	15	30	30	22.35	22.35
6	FIRE WATER CURTAIN PUMP	UGT	1	0	15	15	15	11.175	11.175
7	BUMP PUMP AT PLANT ROOM&BASEMENT	PR	4	0	5	20	20	14.9	14.9
8	GARDEN HYDRANT PUMP	STP	1	1	5	5	10	3.725	7.45
9	SEWAGE TREATMENT PLANT	STP	1	1	60	20	120	14.9	59.4
TOTAL						307.5	480	229.09kW	320.36kW